

The 2019 Index of Employment Deprivation

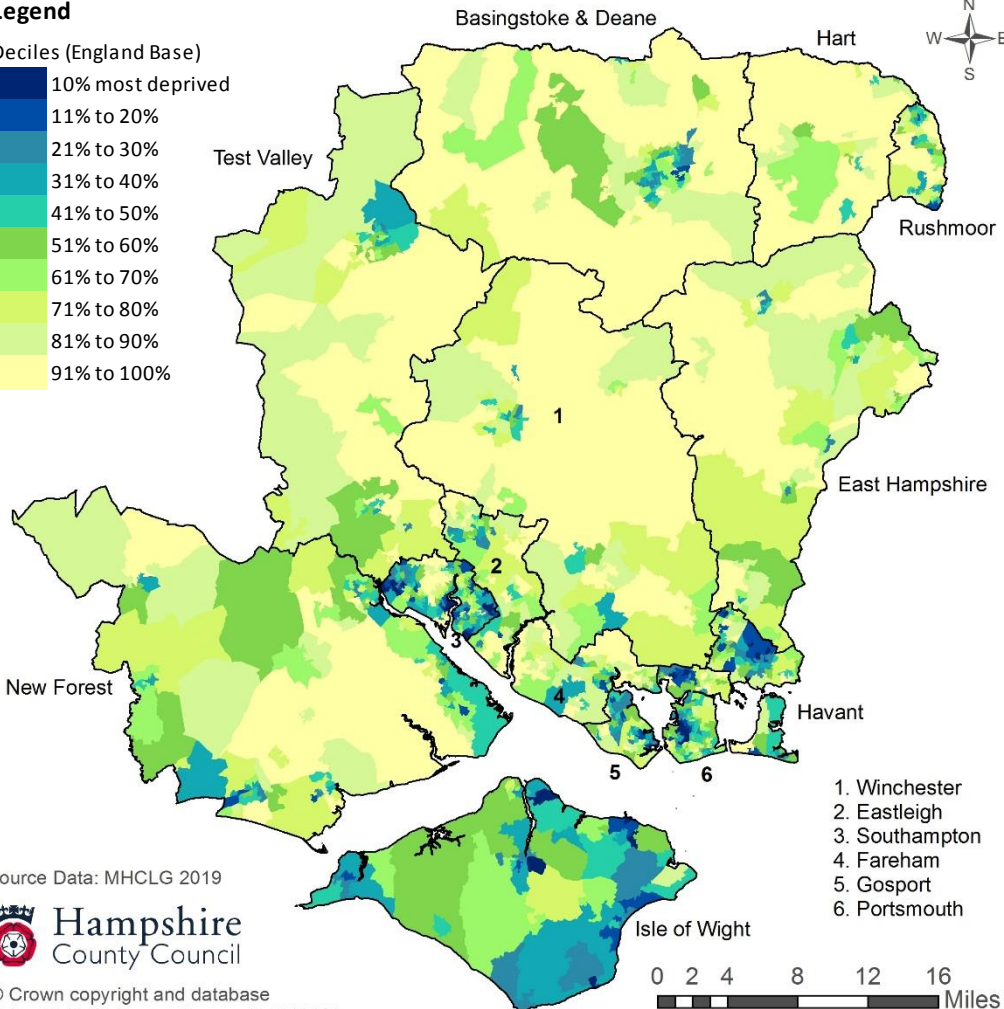
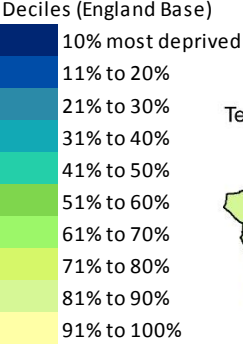


Claimants of Jobseeker's Allowance (both contribution-based and income-based), women aged 18 to 59 and men aged 18 to 64; Claimants of Employment and Support Allowance, women aged 18 to 59 and men aged 18 to 64; Claimants of Incapacity Benefit, women aged 18 to 59 and men aged 18 to 64; Claimants of Severe Disablement Allowance, women aged 18 to 59 and men aged 18 to 64; Claimants of Carer's Allowance, women aged 18 to 59 and men aged 18 to 64; Claimants of Universal Credit in the 'Searching for work' and 'No work requirements' conditionality groups.

The Index of Employment Deprivation measures employment deprivation conceptualised as involuntary exclusion of the working age population from the world of work. The employment deprived are defined as those who would like to work but are unable to do so through unemployment, sickness or disability. There are 32,844 areas (lower super output areas) in England. They are ranked with 1 most deprived.

| Area (Number of LSOAs in each area are in brackets) | No. of LSOAs in the 10% Most Deprived areas in England (% of LSOA in brackets) | No of LSOAs in the 11%-20% Most Deprived areas in England (% of LSOA in brackets) |
|---|--|---|
| Hampshire & Isle of Wight (1,194) | 33 | 73 |
| Hampshire Economic Area (1,105) | 27 | 55 |
| Hampshire County area (832) | 5 | 32 |
| Isle of Wight (89) | 6 | 18 |
| Portsmouth (125) | 10 | 8 |
| Southampton (148) | 12 | 15 |
| Basingstoke and Deane (109) | 0 | 1 |
| East Hampshire (72) | 0 | 0 |
| Eastleigh (77) | 0 | 1 |
| Fareham (73) | 0 | 1 |
| Gosport (53) | 1 | 5 |
| Hart (57) | 0 | 0 |
| Havant (78) | 4 | 16 |
| New Forest (114) | 0 | 5 |
| Rushmoor (58) | 0 | 3 |
| Test Valley (71) | 0 | 0 |
| Winchester (70) | 0 | 0 |

Legend



Source Data: MHCLG 2019



© Crown copyright and database rights 2019 Ordnance Survey 100019180.

LSOA are census based population areas of between 1,000 and 3,000 residents.