

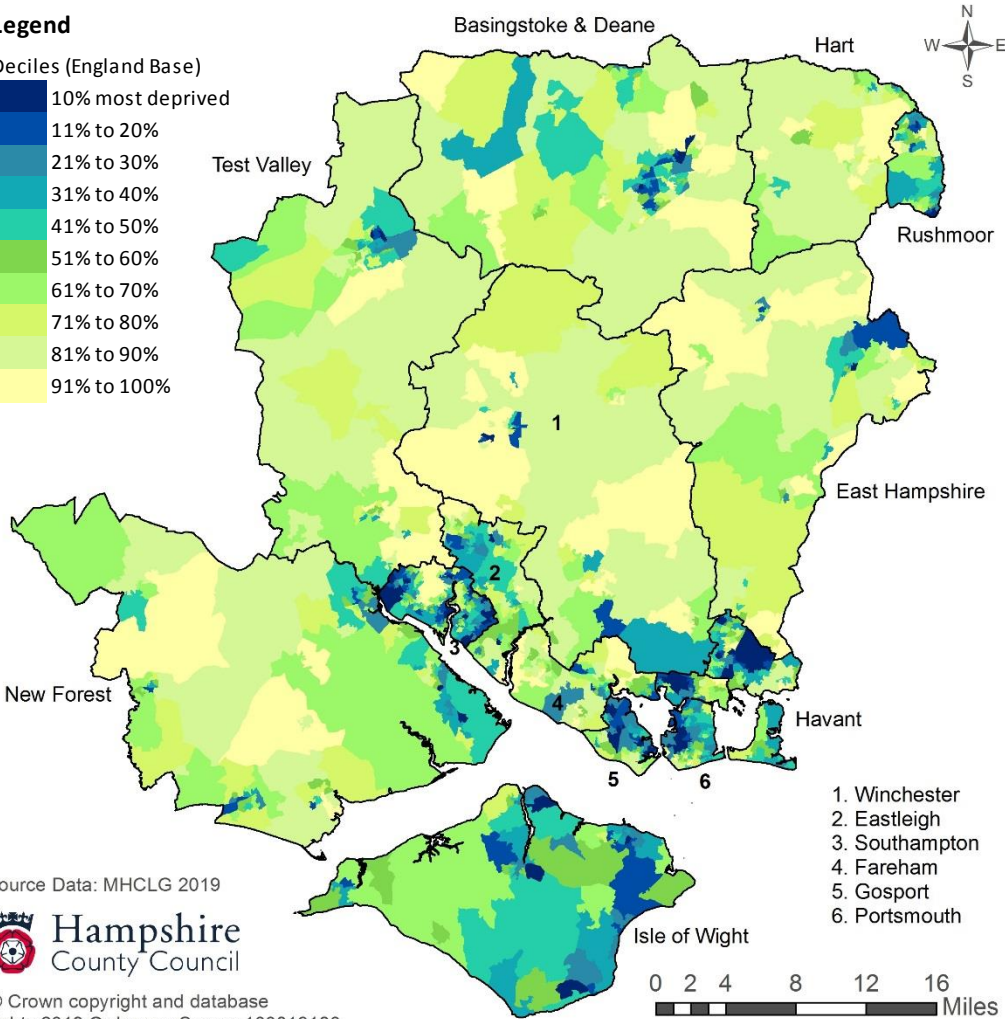
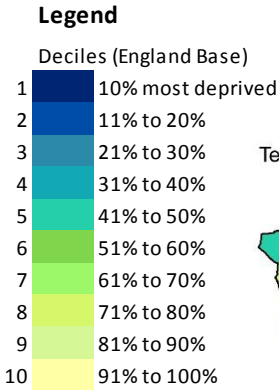
# The 2019 Index of Education (Skills & Training)



Measures: Children & Young People -Key stage 2 attainment: average points score. Key stage 4 attainment: average points score Secondary school absence. Staying on in education post 16. Entry to higher education.  
 Adult Skills - Adults with no or low qualifications, aged 25-59/64 English language proficiency, aged 25-59/64

The Index of Education, Skills and Training captures the extent of deprivation in education, skills and training in an area. The indicators fall into two sub-domains: one relating to children and young people and one relating to adult skills. These two sub-domains are designed to reflect the 'flow' and 'stock' of educational disadvantage within an area respectively. There are 32,844 areas (lower super output areas) in England. They are ranked with 1 most deprived.

Area (Number of LSOAs in each area are in brackets)	No. of LSOAs in the 10% Most Deprived areas in England (% of LSOA in brackets)	No of LSOAs in the 11%-20% Most Deprived areas in England (% of LSOA in brackets)
Hampshire & Isle of Wight (1,194)	97	93
Hampshire Economic Area (1,105)	92	81
Hampshire County area (832)	47	49
Isle of Wight (89)	5	12
Portsmouth (125)	21	10
Southampton (148)	24	22
Basingstoke and Deane (109)	3	13
East Hampshire (72)	1	2
Eastleigh (77)	2	3
Fareham (73)	0	4
Gosport (53)	10	7
Hart (57)	0	0
Havant (78)	22	3
New Forest (114)	2	6
Rushmoor (58)	2	5
Test Valley (71)	3	2
Winchester (70)	2	4



Source Data: MHCLG 2019



© Crown copyright and database rights 2019 Ordnance Survey 100019180.

LSOA are census based population areas of between 1,000 and 3,000 residents.