

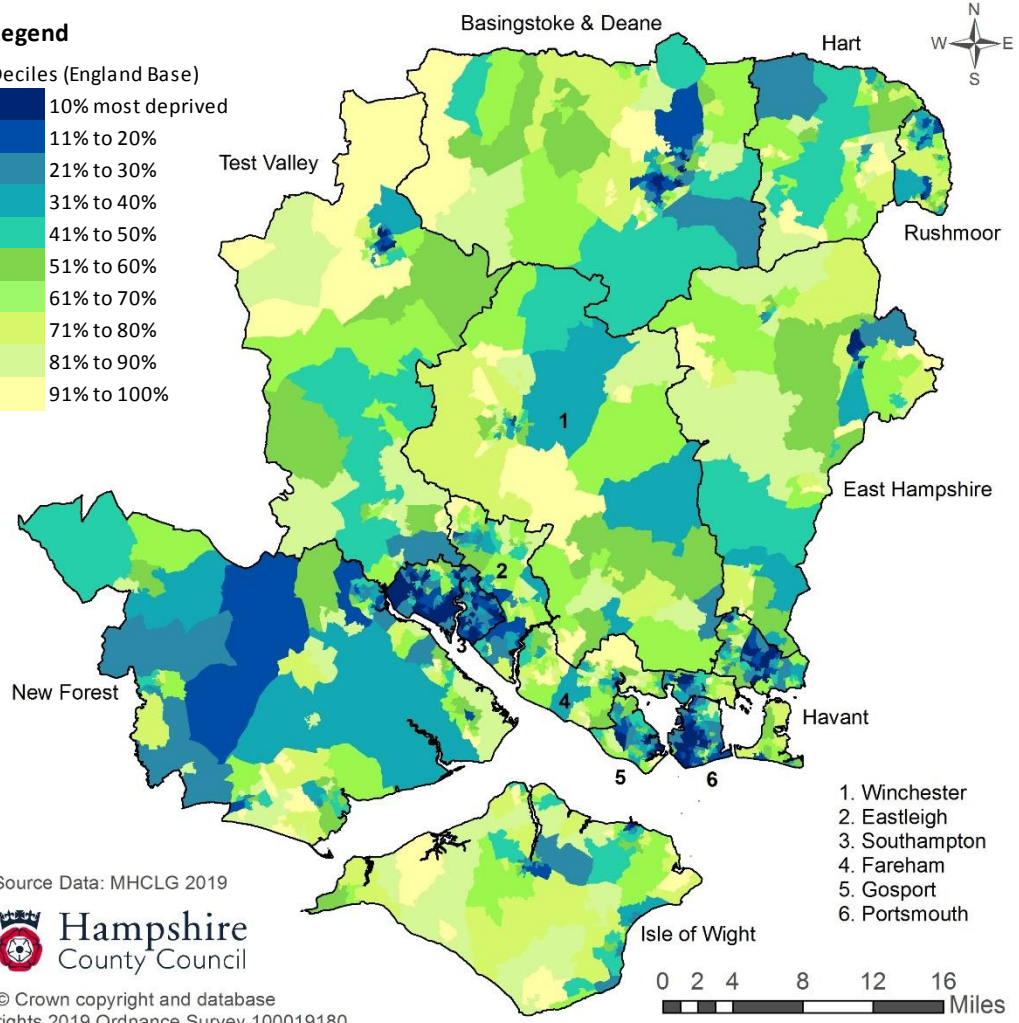
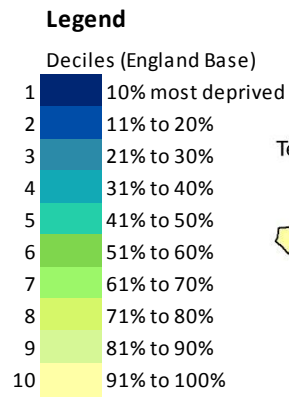
The 2019 Index of Crime Deprivation



Measures: the domain measures the risk of personal and material victimisation at local level in four ways: Violence – number of recorded violent crimes (18 recorded crime types in 2016/17; 20 recorded crime types in 2017/18) per 1,000 at risk population; Burglary – number of recorded burglaries (4 recorded crime types) per 1,000 at risk population; Theft – number of recorded thefts (5 recorded crime types) per 1,000 at risk population; Criminal damage – number of recorded crimes (8 recorded crime types) per 1,000 at risk population.

The Index of Crime Deprivation measures the rate of recorded crime for four major crime types – violence, burglary, theft and criminal damage – representing the risk of personal and material victimisation at a small area level. There are 32,844 areas (lower super output areas) in England. They are ranked with 1 most deprived.

| Area (Number of LSOAs in each area are in brackets) | No. of LSOAs in the 10% Most Deprived areas in England (% of LSOA in brackets) | No of LSOAs in the 11%-20% Most Deprived areas in England (% of LSOA in brackets) |
|---|--|---|
| Hampshire & Isle of Wight (1,194) | 121 | 112 |
| Hampshire Economic Area (1,105) | 120 | 108 |
| Hampshire County area (832) | 28 | 54 |
| Isle of Wight (89) | 1 | 4 |
| Portsmouth (125) | 33 | 25 |
| Southampton (148) | 59 | 29 |
| Basingstoke and Deane (109) | 5 | 13 |
| East Hampshire (72) | 2 | 1 |
| Eastleigh (77) | 0 | 4 |
| Fareham (73) | 0 | 1 |
| Gosport (53) | 5 | 7 |
| Hart (57) | 0 | 0 |
| Havant (78) | 12 | 8 |
| New Forest (114) | 0 | 8 |
| Rushmoor (58) | 1 | 8 |
| Test Valley (71) | 3 | 3 |
| Winchester (70) | 0 | 1 |



Source Data: MHCLG 2019



© Crown copyright and database rights 2019 Ordnance Survey 100019180.

LSOA are census based population areas of between 1,000 and 3,000 residents.