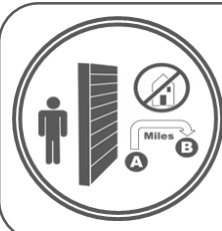


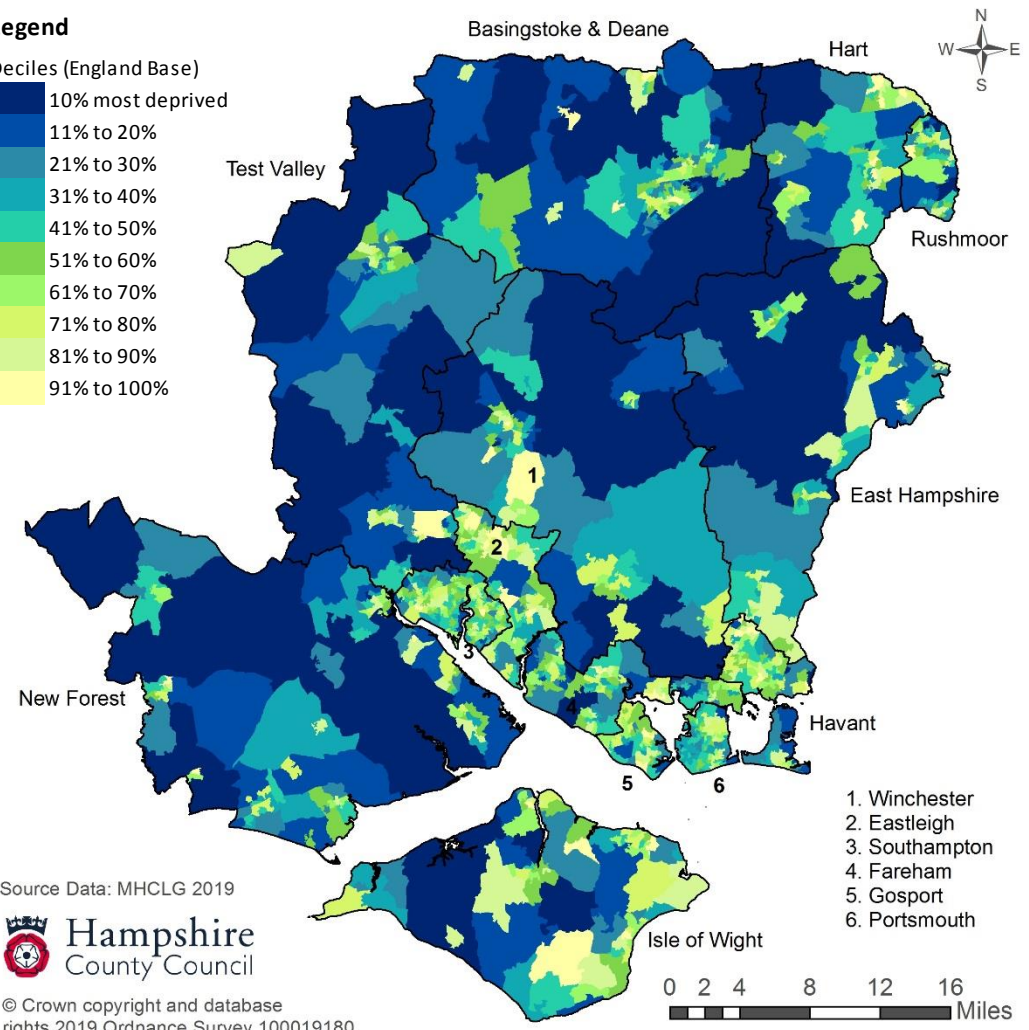
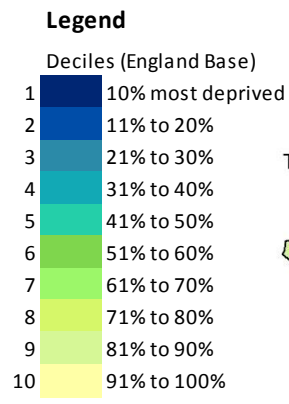
The 2019 Index of Barriers (Housing & Services)



Measures:
 Wider Barriers: Household overcrowding. Homelessness. Housing affordability
 Geographical Barriers - Road distance to: post office; primary school; general store / supermarket; GP surgery.

The Index of Barriers to Housing and Services measures the physical and financial accessibility of housing and key local services. The indicators fall into two sub-domains: 'geographical barriers', which relate to the physical proximity of local services, and 'wider barriers' which includes issues relating to access to housing such as affordability. There are 32,844 areas (lower super output areas) in England. They are ranked with 1 most deprived.

Area (Number of LSOAs in each area are in brackets)	No. of LSOAs in the 10% Most Deprived areas in England (% of LSOA in brackets)	No of LSOAs in the 11%-20% Most Deprived areas in England (% of LSOA in brackets)
Hampshire & Isle of Wight (1,194)	71	95
Hampshire Economic Area (1,105)	67	89
Hampshire County area (832)	64	77
Isle of Wight (89)	4	6
Portsmouth (125)	2	6
Southampton (148)	1	6
Basingstoke and Deane (109)	11	17
East Hampshire (72)	8	5
Eastleigh (77)	0	1
Fareham (73)	2	6
Gosport (53)	0	3
Hart (57)	2	4
Havant (78)	2	4
New Forest (114)	13	19
Rushmoor (58)	4	4
Test Valley (71)	13	6
Winchester (70)	9	8



Source Data: MHCLG 2019



© Crown copyright and database rights 2019 Ordnance Survey 100019180.

LSOA are census based population areas of between 1,000 and 3,000 residents.