



# **Monitoring Change in Priority Habitats, Priority Species and Designated Sites**

## **For Local Plan Annual Monitoring Reports**

### **2015/16 (including breakdown by district)**

---

Produced by

**Hampshire Biodiversity Information Centre**

November 2016

## Contents

1 Biodiversity Monitoring in Hampshire .....	4
2 Priority habitats.....	7
3 Nature Conservation Designations.....	12
4 Priority habitats within Designated Sites.....	13
5 Condition of Sites of Special Scientific Interest (SSSIs).....	14
6 SINC changes observed and recorded.....	16
7. SINC in Positive Management (SD 160) - Not reported for 2015-16.....	17
8 Changes in Notable Species Status over the period 2005-2015 .....	18
09 Basingstoke and Deane Borough Council .....	26
12 Fareham Borough Council .....	32
15 Havant Borough Council .....	38

This page is intentionally left blank.

### Sharing information about Hampshire's wildlife

The Hampshire Biodiversity Information Centre Partnership includes local authorities, government agencies, wildlife charities and biological recording groups.



# 1 Biodiversity Monitoring in Hampshire

## 1.1 Background

The Localism Act 2011 requires every local authority to produce their Authority's Monitoring Report containing information on a number of topics including the progress and effectiveness of the Local Plan, and the extent to which the planning policies set out in the Local Plan documents are being achieved – which can include policies covering biodiversity and nature conservation.

This is important to enable communities and interested parties to be aware of progress.

In addition, the National Planning Policy Framework (Section 117) states that; to minimise impacts on biodiversity and geodiversity, planning policies should promote the preservation, restoration and re-creation of priority habitats, ecological networks and the protection and recovery of priority species populations, linked to national and local targets, and **identify suitable indicators for monitoring biodiversity in the plan;**

The Hampshire Biodiversity Information Centre (HBIC) provides comprehensive information relating to biodiversity in Hampshire, working in partnership with both data users and data providers for public benefit. HBIC is able to monitor changes in area of designated sites and habitats by district/borough/ unitary through the information it gathers and maintains on a Geographic Information System (GIS). HBIC can also provide information on species distribution and trends across Hampshire through the data it holds on behalf of its partner species recording groups and in consultation with them.

This report continues, as in previous years, to provide baseline data to local authorities in order to monitor changes in priority habitats, designated sites and selected notable species.

## 1.2 Explanatory Notes

**1.2.1 Mapping change in extent of priority habitat:** The full extent of priority habitats in Hampshire is not fully known - and may never be fully known due to the dynamic state of our countryside and the difficulties of obtaining access to many areas. HBIC is working with its funding partners to improve information on Priority habitat extent and condition through the Hampshire Habitat Survey Programme and from other survey data that becomes available. This information is used by HBIC to maintain a GIS layer mapping the extent of broad and priority habitats in Hampshire. Any 'gains' in priority habitat can be due to additional unknown habitat being discovered, habitat restoration or creation, or re-interpretation of old survey data. Reasons for change are logged in the habitat data capture tool. HBIC also log changes to SINCS which has been recently re-surveyed which can include losses of priority habitat to development or agricultural improvement. These are set out in the detailed District chapters of the report.

**1.2.2 Change in baseline figures for habitat data.** HBIC, along with many other environmental records centres, have translated their habitat data into a classification system called IHS (Integrated Habitat System). It is not a straightforward 1:1 translation from the previous Phase 1 habitat categories into IHS and there will continue to be changes to the baseline which are solely due to the on-going re-interpretation of old survey data and aerial photographs into IHS.

More importantly, the Habitat GIS dataset has been converted into the OS MasterMap framework resulting in an increase in number of polygons from c80,000 to over several million. This new dataset requires careful on-going validation and tidying up of what was essentially an automated process, particularly if new datasets are incorporated from other organisations. As the MasterMap version used is now quite old an upgrade to the latest version is planned soon which may lead to further habitat/land-use changes as 'new development' is plugged into the habitat layer.

This dataset is being used for all HBIC's work; for data requests, screening planning applications etc., and for the production of this monitoring report. Whilst for most Priority habitats there continues to be small changes in extent, as a result of new field survey or aerial photographic interpretation, for two habitats there had been some significant changes in extent which are summarised below and have been referred to in previous monitoring reports:

- **Lowland Mixed Deciduous Woodland** - decreased from 46,217 ha to 36,291ha during the 2011-12 period, partly because 4,400ha were 'converted to wood-pasture in the New Forest and because rows of trees and small 'clumps' (especially in urban situations) were stripped out, and polygons were snapped to MasterMap boundaries rather than 'canopy'. Any small clump which, when surveyed, is found to support a qualifying NVC type is added back in. Similarly larger woodlands are removed from the priority habitat type if, when surveyed, they do not support qualifying NVC types.
- **Coastal salt marsh** - all salt marsh data was overwritten with EA data during the 2011-12 period with a resulting 50% 'loss' of saltmarsh. Much of it had been re-interpreted as 'intertidal mudflats' and so the two figures should be treated together until such time as the data can be validated against the latest aerial photographs. It appears that the interpretation in the western Solent was accurate and agreed with HBIC's data whilst the eastern half was very patchy in its accuracy with perhaps lower salt marsh not being visible (i.e. below high water)

The checking/re-interpretation of the EA coastal data is being undertaken as and when time allows.

**1.2.3. Revised UK List of Priority Habitats:** In addition to changes caused by IHS a further 16 Priority habitats were added to the UK List (NERC S41 list) during the 2011-12 period. For Hampshire, this includes 'Traditional Orchards' and 'Open mosaic habitats on previously developed land', along with an expansion in scope and definition of 'Hedgerows', 'Ponds' and 'Rivers'. The definitions still need refining for these habitats and a set of traditional orchard polygons created by the People's Trust for Endangered Species with funding from Natural England will need to be verified by HBIC before being added to the GIS dataset. Similarly, for a reed bed dataset produced by the RSPB.

**1.2.4 Mapping change in priority habitat extent due to development:** As mentioned, it is difficult to identify changes in habitat extent or species status that have occurred solely due to the impact of development, particularly within a given year. A GIS layer of the boundaries of all completed planning permissions from the previous year would be needed, which would need to show the actual footprint of each development plus any mitigation measures, or restoration/ re-creation opportunities in order to predict a net loss or gain in biodiversity. Meanwhile, the reasons for any changes in habitat extent observed from field survey are being logged but may often be due to development or some other land use change which has occurred since the last survey - which may be up to 10-20 years ago.

**1.2.5 Assessment of SSSI condition:** The condition of priority habitats is currently known for those habitats designated as Sites of Special Scientific Interest (SSSIs) and for a random sample of SINC's that may be surveyed in any one year. Natural England conduct condition assessments on SSSIs on a five year rolling programme with some input from HBIC surveys. Information on the SSSI condition assessment is available from Natural England for the reporting period and has, for this report, been summarised at the precise District level.

**1.2.6 Mapping changes in Sites of Importance for Nature Conservation:** HBIC has responsibility for identifying, mapping and monitoring SINC's, and for maintaining an up to date GIS layer on behalf of the local planning authorities. HBIC's SINC's database records new SINC's, deleted SINC's and all changes to individual SINC's, including minor changes to boundaries as a result of snapping to MasterMap. Many of the amendments and deletions will relate to changes that may have 'physically' occurred many years before the sites were re-surveyed but were only recorded and approved during this reporting period - similar to mapping changes in habitat extent.

**Please note** that the data within this report excludes SINC's which have been approved by the Panel but which remain as candidate SINC's due to objections from landowners who wish to provide their own evidence back to the SINC Panel. They are however shown on GIS updates to partners as Candidate SINC's. Any changes to SINC's during the 2015-16 period are described in full in the detailed District chapters.

**1.2.7 Mapping change in species populations:** HBIC holds nearly 6 million species records for Hampshire, a number that is increasing rapidly, particularly as technology for on-line recording improves. Whilst it can be difficult to detect species trends at the County level, let alone at a district level, a suite of 50 species have been chosen for which there appears to be good data and for which there is wide geographic spread. **It has been agreed that population trends for the 50 species should only be gathered every 5 years.** See Section 8.

**1.2.8 Source/date for habitat and designations data:** All statistics are based on the HBIC GIS layers archived at the end of March 2015 and March 2016 except for the SINC's data which is derived from the SINC's database once Panel approval has been given in March 2016 and the GIS layer updated in June 2016.

**1.2.9 The New Forest:** The New Forest District is treated as two separate entities: the New Forest National Park Authority (which includes a small part of Test Valley and Wiltshire) and the remaining New Forest District.

**1.2.10 The South Downs National Park :** because only part of the SDNP lies within Hampshire separate analysis has not been done for that part of the national park.

Further explanatory notes and a brief summary of trends are given at the end of some of the tables.

## 2 Priority habitats

Table 1: Extent of Priority habitats in Hampshire (as at 31st March 2016)

Priority Habitat	Comments on Completeness	BDBC (ha)	EBC (ha)	EHDC (ha)	FBC (ha)	GBC (ha)	HDC (ha)	HvBC (ha)	NFDC (ha)	NFNPA (ha)	PCC (ha)	RBC (ha)	SCC (ha)	TVBC (ha)	WCC (ha)	Total Area (ha)	% of total Hants area	2014/15 Total area (ha)	Change in area (ha)
<b>Grasslands</b>																			
<b>Lowland Calcareous Grassland</b>	Comprehensive	217		337	17		3	5	282		55		1	763	417	2,097	0.5	2,154	-57
<b>Lowland Dry Acid Grassland</b>	Comprehensive. Some overlap with Lowland Heath	25	1	172	6	9	197	21	41	3,058	7	67	2	64	11	3,681	1	3,677	4
<b>Lowland Meadows</b>	Comprehensive. Some overlap with Coastal and Floodplain Grazing Marsh and with Wood-Pasture and Parkland.	157	34	102	24	12	129	55	179	275	20	20	29	152	292	1,480	0.4	1,569	-89
<b>Purple Moor Grass and Rush Pastures</b>	Comprehensive. Some overlap with Coastal and Floodplain Grazing Marsh.	34	32	23	4	1	115	5	27	1,032		15	2	134	56	1,480	0.4	1,458	22
<b>Heathlands</b>																			
<b>Lowland Heathland</b>	Comprehensive. Some overlap with Lowland Dry Acid Grassland.	180	15	674	2	4	268	1	605	9,934		108	3	19		11,813	3	11,762	51

Sharing information about Hampshire's wildlife

The Hampshire Biodiversity Information Centre Partnership includes local authorities, government agencies, wildlife charities and biological recording groups.

Priority Habitat	Comments on Completeness	BDBC (ha)	EBC (ha)	EHDC (ha)	FBC (ha)	GBC (ha)	HDC (ha)	HvBC (ha)	NFDC (ha)	NFNPA (ha)	PCC (ha)	RBC (ha)	SCC (ha)	TVBC (ha)	WCC (ha)	Total Area (ha)	% of total Hants area	2014/15 Total area (ha)	Change in area (ha)
<b>Woodland, wood-pasture and parkland</b>																			
<b>Lowland Beech and Yew Woodland</b>	Not comprehensive. On-going work to distinguish from Lowland Mixed Deciduous Woodland.	9	1	91					2	61				49	41	254	0.1	227	27
<b>Lowland Mixed Deciduous Woodland</b>	Ongoing work as all ancient/ non ancient woodland has been included yet not all surveyed for qualifying NVC types. .	6,231	544	5,542	455	82	2,602	183	1,626	6,678	8	223	263	5,854	5,715	36,006	9.3	36,315	-309
<b>Wet Woodland</b>	Fairly comprehensive. Areas will exist in LMDW that have not yet been surveyed for qualifying types.	417	117	212	51	19	124	37	64	490	1	44	56	176	233	2,041	0.5	2,038	3
<b>Wood-Pasture and Parkland</b>	Not comprehensive. Further work needed to classify this habitat within historic parkland.	506	3	17	12	2	210	15	4	4,448	10		67	105	119	5,518	1.4	5,505	13



Priority Habitat	Comments on Completeness	BDBC (ha)	EBC (ha)	EHDC (ha)	FBC (ha)	GBC (ha)	HDC (ha)	HvBC (ha)	NFDC (ha)	NFNPA (ha)	PCC (ha)	RBC (ha)	SCC (ha)	TVBC (ha)	WCC (ha)	Total Area (ha)	% of total Hants area	2014/15 Total area (ha)	Change in area (ha)
<b>Arable, orchards and hedgerows</b>																			
<b>Arable Field Margins</b>	Incomplete. Figures only show SINCs on arable land designated for rare arable plants.	[26.33]		[7.22]			[6.95]	[26.73]	[0.81]					[22.74]	[0.94]	[91.72]	[0.02]	[99]	[-7.28]
<b>Hedgerows</b>	No comprehensive information for Priority hedgerows. All hedgerows mapped as linear features (km)	[2,721]	[301]	[2,134]	[265]	[25]	[919]	[200]	[2,104]	[1,922]	[66]	[11]	[12]	[2,741]	[3,036]	[16,457]			
<b>Traditional Orchards</b>	Work to be undertaken to incorporate areas identified by PTES under contract to NE																0	1	-1
<b>Open waters</b>																			
<b>Ponds</b>	No comprehensive data yet available.																		
<b>Eutrophic Standing Waters</b>	No comprehensive information yet available.					2			35				1	8		46	0	44	2
<b>Rivers</b>	Incomplete data. Approx. figures for Chalk Rivers only calculated from EA's River GIS layer (km)	[101]	[24]	[25]	[11]		[63]		[76]	[15]			[19]	[182]	[118]	[634]		[634]	[0]

Priority Habitat	Comments on Completeness	BDBC (ha)	EBC (ha)	EHDC (ha)	FBC (ha)	GBC (ha)	HDC (ha)	HvBC (ha)	NFDC (ha)	NFNPA (ha)	PCC (ha)	RBC (ha)	SCC (ha)	TVBC (ha)	WCC (ha)	Total Area (ha)	% of total Hants area	2014/15 Total area (ha)	Change in area (ha)
<b>Wetlands</b>																			
<b>Coastal and Floodplain Grazing Marsh</b>	Further work is needed to identify all qualifying grazing marsh. Some overlap with Lowland Meadows and with Purple Moor Grass and Rush Pastures.	819	329	734	345	72	863	178	1,520	1,405	83	30	19	1,925	1,239	9,561	2.5	9,677	-116
<b>Lowland Fens</b>	Comprehensive.	3		18			12		9	1,849				3	5	1,899	0.5	1,900	-1
<b>Reedbeds</b>	Not comprehensive	2	9		49	17	1	2	41	81	21		4	45	7	279	0.1	278	1
<b>Coastal</b>																			
<b>Coastal saltmarsh</b>	EA data partly verified		29		30	28		209	158	351	58		2	2	2	869	0.2	903	-34
<b>Coastal Sand Dunes</b>	EA data partly verified							40	3	5						48	0	50	-2
<b>Coastal Vegetated Shingle</b>	Comprehensive		3		12	63		47	20	49	26		3			223	0.1	229	-6
<b>Intertidal mudflats</b>	EA data partly verified		136		270	111		1,380	408	854	1,124		129		6	4,418	1.1	4,418	0
<b>Maritime Cliff and Slopes</b>	Comprehensive				1			1	38	3						43	0	41	2
<b>Saline lagoons</b>	Comprehensive				1	9		6	3	32	4					55	0	55	
<b>Marine</b>																			
<b>Seagrass beds</b>	Not Comprehensive. Separate HWT data available							46			3					49	0	49	
<b>Total</b>		<b>8,600</b>	<b>1,254</b>	<b>7,923</b>	<b>1,279</b>	<b>431</b>	<b>4,524</b>	<b>2,231</b>	<b>5,065</b>	<b>30,605</b>	<b>1,420</b>	<b>507</b>	<b>581</b>	<b>9,299</b>	<b>8,143</b>	<b>81,862</b>	<b>21</b>	<b>82,352</b>	<b>-490</b>

**Notes:**

1. The extent of Priority habitat remains at **21%** of the total area of Hampshire and the New Forest National Park area even though 490ha has been lost (representing 0.6% of the total area of Priority habitat). See note 4
2. The Combined total area of Hampshire (to LWM) & NF National Park is 388,467 ha.
3. The Hampshire and LPA totals of Priority habitat are the sum of the individual Priority habitat types (excluding Arable Field Margins, Hedgerows and Rivers). This is not the total area of land covered by Priority habitat within Hampshire and each LPA because some Priority habitat types overlap and hence are double counted (e.g. Floodplain Grazing Marsh may overlap Lowland Meadows or Purple Moor Grass and Rush Pastures).
4. Lowland Mixed Deciduous Woodland, Lowland Meadow and Calcareous Grassland have suffered a higher than normal overall loss due to;
  - a. The 2015 habitat layer excluding those polygons (within the 2014 layer) which were listed as “potential Priority habitats”, with a determination quality of “Not present but close to definition” included.
  - b. Recent surveys showing habitat degradation (mainly in the case of the grasslands) or where new evidence didn’t support the original interpretation of LMDW (e.g. Bramley Training Area).
5. Due to lack of any detailed digital information on individual hedgerows HBC are now including total length of hedgerow within each LPA area, with the intention in future to tag each hedgerow with its species composition with regard to the Priority habitat criteria (>80% native species)
6. Salt-marsh and inter-tidal mudflat figures should be added together for the time being
7. Very minor changes in area might not always reflect real change because of the rounding of figures.
8. The rounding of figures may also not reflect the more detailed figures given in the District accounts.

### 3 Nature Conservation Designations

**Table 2: Extent of Nature Conservation Designations in Hampshire (as at 31st March 2016)**

Designation	BDBC (ha)	EBC (ha)	EHDC (ha)	FBC (ha)	GBC (ha)	HDC (ha)	HvBC (ha)	NFDC (ha)	NFNPA (ha)	PCC (ha)	RBC (ha)	SCC (ha)	TVBC (ha)	WCC (ha)	Total area (ha)	% of Hants	2014/15 Total area (ha)	Change in area (ha)
<b>LNR</b>	245	232	334	418	40	76	218	32	416	118	2	30	102	103	2,366	0.61	2,366	
<b>NNR</b>	23		358	120		31		339	1,199					103	2,173	0.56	2,173	
<b>RAMSAR</b>		184		540	165		2,430	1,629	30,152	1,707		111	52	23	36,993	9.52	36,993	
<b>SAC</b>		296	1,540	195	4		2,270	614	30,643	542		20	789	182	37,095	9.55	37,093	2
<b>SPA</b>		184	1,757	527	161	2,099	2,430	1,626	30,122	1,707	451	111	599	23	41,797	10.76	41,792	5
<b>SSSI</b>	806	427	2,711	563	265	2,695	2,677	2,571	32,190	1,787	471	216	1,868	1,313	50,560	13.02	50,554	6
<b>Stat Sites Combined</b>	861	632	2,809	749	277	2,723	2,716	2,523	32,266	1,788	474	233	1,929	1,365	51,345	<b>13.22</b>	51,337	<b>8</b>
<b>SINC</b>	6,180	818	6,175	611	368	1,986	886	2,446	3,034	339	481	423	5,546	6,741	36,034	<b>9.27</b>	35,990	<b>43</b>

#### Notes:

1. A total of 23 new SINC's were approved by the SINC panel and designated during 2015/16. 4 SINC's were deleted. The net increase in overall SINC area was 43ha
2. The figures do not include the marine pSPA "Solent and Dorset Coast".
3. The statutory sites data was downloaded from Natural England on 1st April, so the data has been considered to be as at 31st March 2016. Natural England has re-digitised some sites presumably for accuracy such that figures for some statutory sites will have changed without any real change on the ground – by 6ha overall.
4. The area totals for 'Statutory sites combined' do not equal the total for each of the individual statutory site designations for each district because there is often an overlap between statutory designations.

#### Sharing information about Hampshire's wildlife

The Hampshire Biodiversity Information Centre Partnership includes local authorities, government agencies, wildlife charities and biological recording groups.

## 4 Priority habitats within Designated Sites

**Table 3: Extent of Priority habitats within Designated Sites in Hampshire (as at 31st March 2016)**

Designated Sites	BDBC (ha)	EBC (ha)	EHDC (ha)	FBC (ha)	GBC (ha)	HDC (ha)	HvBC (ha)	NFDC (ha)	NFNPA (ha)	PCC (ha)	RBC (ha)	SCC (ha)	TVBC (ha)	WCC (ha)	Total area (ha)	% of total Priority Habitat	20014/15 Total area (ha)	Change area (ha)
<b>Statutory sites combined</b>	646	440	1,498	580	217	1,205	1,774	2,015	25,716	1,309	153	247	1,412	935	38,147	45.27	38,220	-73
<b>SINC</b>	4,195	512	3,289	395	150	1,285	331	1,607	1,817	176	173	247	3,656	3,530	21,363	25.35	21,586	-223
<b>Total combined</b>	<b>4,810</b>	<b>906</b>	<b>4,727</b>	<b>899</b>	<b>360</b>	<b>2,467</b>	<b>2,094</b>	<b>3,446</b>	<b>27,522</b>	<b>1,368</b>	<b>322</b>	<b>481</b>	<b>4,905</b>	<b>4,425</b>	<b>58,732</b>	<b>69.70</b>	<b>59,047</b>	<b>-315</b>
<b>% of total Priority Habitat</b>	<b>55.9</b>	<b>72.3</b>	<b>59.7</b>	<b>70.3</b>	<b>28.7</b>	<b>54.5</b>	<b>93.8</b>	<b>68.1</b>	<b>89.9</b>	<b>96.3</b>	<b>63.6</b>	<b>82.8</b>	<b>52.7</b>	<b>54.3</b>	<b>69.7</b>		<b>71.76</b>	

### Notes:

The total area of Habitat in Hampshire (to LWM) & NF National Park = 81,862 ha.

The area totals for 'Total combined' designated sites do not equal the sum of the 'statutory sites combined' and 'SINC' figures for each district and the total for Hampshire because there is some overlap between statutory designated sites and SINCS.

The loss of Priority habitat has occurred both inside and outside of the designated sites, more so inside the designated sites with a drop from 71.76% to 69.7% of total area of designated sites.

### Sharing information about Hampshire's wildlife

The Hampshire Biodiversity Information Centre Partnership includes local authorities, government agencies, wildlife charities and biological recording groups.

## 5 Condition of Sites of Special Scientific Interest (SSSIs)

Table 4: Condition of Sites of Special Scientific Interest (SSSIs) in Hampshire (as at 31st March 2016)

District	Favourable		Unfavourable Recovering		Unfavourable No Change		Unfavourable Declining		Part Destroyed		Destroyed		Grand Total
	Area (ha)	Area (%)	Area (ha)	Area (%)	Area (ha)	Area (%)	Area (ha)	Area (%)	Area (ha)	Area (%)	Area (ha)	Area (%)	Area (ha)
Basingstoke & Deane	210	26.02%	561	69.6%	32	4.02%	3	0.36%					806
Eastleigh	197	46.19%	199	46.71%	29	6.89%					1	0.22%	426
East Hampshire	915	33.73%	1,790	66.02%	3	0.12%	3	0.12%					2,711
Fareham	294	52.3%	264	46.86%		0%	5	0.84%					563
Gosport District	86	32.29%	171	64.5%	2	0.79%	2	0.74%			4	1.68%	265
Hart	326	12.08%	2,232	82.79%	8	0.29%	124	4.59%	6	0.24%			2,696
Havant	110	4.11%	2,567	95.89%									2,677
New Forest District	1,158	45.05%	1,320	51.33%	74	2.88%	19	0.73%					2,571
New Forest NP	16,769	52.09%	14,748	45.82%	362	1.13%	309	0.96%			2	0.01%	32,190
Portsmouth	257	14.36%	1,528	85.52%		0.01%					2	0.1%	1,787
Rushmoor	72	15.35%	393	83.37%		0%	6	1.28%					471
Southampton	111	51.29%	102	47.28%	3	1.43%							216
Test Valley	453	24.24%	1,208	64.64%	190	10.18%	18	0.94%					1,869
Winchester	384	29.26%	663	50.49%	182	13.85%	76	5.81%			8	0.59%	1,313
<b>Grand Total</b>	<b>21,342</b>	<b>42.2%</b>	<b>27,746</b>	<b>54.9%</b>	<b>885</b>	<b>1.8%</b>	<b>565</b>	<b>1.1%</b>	<b>6</b>	<b>0%</b>	<b>17</b>	<b>0%</b>	<b>50,561</b>

### Notes:

1. The total amount of SSSI in Hampshire in 'Favourable' or 'Unfavourable Recovering' condition remains at 97.1%.
2. The total amount of SSSI in each District may differ from Natural England figures because NE does not always assign separate portions of SSSIs to the correct District i.e. where the majority of a SSSI occurs within another District it is assigned to that District). HBIC will clip the SSSI management units exactly to the District boundaries.
3. Natural England has re-digitised some sites (East Hants) such that the figures will have changed without any real change on the ground – by 6ha overall.
4. There are minor discrepancies in totals for LPA area compared to the LPA detailed tables because of different rounding levels.

### Sharing information about Hampshire's wildlife

The Hampshire Biodiversity Information Centre Partnership includes local authorities, government agencies, wildlife charities and biological recording groups.

**Table 5: Percentages for SSSIs in Favourable and Unfavourable Recovering condition in Hampshire (as at 31st March 2016)**

District	%SSSI in 'Favourable' or 'Unfavourable Recovering' condition		
	2015/16	2014/15	Change
<b>Basingstoke &amp; Deane</b>	95.62%	95.62%	0%
<b>Eastleigh</b>	92.88%	92.89%	0.01%
<b>East Hampshire</b>	99.75%	99.75%	0%
<b>Fareham</b>	99.16%	99.16%	0%
<b>Gosport District</b>	96.79%	96.79%	0%
<b>Hart</b>	94.88%	94.88%	0%
<b>Havant</b>	100%	100%	0%
<b>New Forest District</b>	96.38%	96.38%	0%
<b>New Forest NP</b>	97.96%	97.91%	-0.05%
<b>Portsmouth</b>	99.89%	99.89%	0%
<b>Rushmoor</b>	98.72%	98.72%	0%
<b>Southampton</b>	98.57%	98.57%	0%
<b>Test Valley</b>	88.88%	88.88%	0%
<b>Winchester</b>	79.73%	79.74%	0.01%
<b>Total</b>	<b>97.14%</b>	<b>97.11%</b>	<b>-0.02%</b>

**Summary:**

1. There were only very minor or no changes/improvements in the coverage of 'Favourable' or 'Unfavourable Recovering' SSSIs.
2. Nearly all Districts have attained at least 95% of their SSSIs in 'Favourable' or 'Unfavourable Recovering' condition.
3. Winchester is still showing the lowest % in these two categories mainly due to over 30 % of the River Itchen SSSI continuing to be in 'unfavourable no change' or 'unfavourable declining' condition.

## 6 SINC changes observed and recorded

Table 6: Extent of changes observed and recorded between 1st April 2015 and 31st March 2016

District	SINCs (31/03/2015)		SINCs (31/03/2016)		New SINCs		Amended SINCs		Deleted SINCs		Net change		
	Number	Area (ha)	Number	Area (ha)	Number	Area (ha)	Number	Area (ha)	Number	Area (ha)	Number	Area (ha)	% change in area
<b>BDBC</b>	794	6,174.63	796	6,180.26	2	6.16	3	-0.53			2	5.63	0.09
<b>EBC</b>	145	815.24	146	818.03	1	2.79	2	0.00			1	2.79	0.34
<b>EHDC</b>	568	6,175.93	570	6,175.19	2	1.02	3	-1.76			2	-0.74	-0.01
<b>FBC</b>	109	610.11	109	610.72			1	0.61			0	0.61	0.10
<b>GBC</b>	37	368.36	37	368.36			2	0.00			0	0.00	0.00
<b>HDC</b>	273	1,985.05	273	1,986.47			2	1.42			0	1.42	0.07
<b>HvBC</b>	145	886.05	145	885.96	1	2.33	2	-1.73	1	-0.69	0	-0.09	-0.01
<b>NFDC</b>	223	2,443.18	225	2,445.87	2	1.05	1	1.64			2	2.69	0.11
<b>NFNPA</b>	385	3,032.95	386	3,033.86	1	0.91	1	0.00			1	0.91	0.03
<b>PCC</b>	26	332.27	27	338.78	1	2.13	1	4.38			1	6.51	1.96
<b>RBC</b>	36	475.22	38	480.59	2	7.49	2	-2.12			2	5.37	1.13
<b>SCC</b>	49	423.22	49	423.22			1	0.00			0	0.00	0.00
<b>TVBC</b>	569	5,536.10	576	5,545.91	7	5.94	2	3.87			7	9.81	0.18
<b>WCC</b>	687	6,734.33	688	6,741.13	4	9.63	5	1.35	3	-4.18	1	6.80	0.10
<b>Total</b>	<b>4046</b>	<b>35,992.64</b>	<b>4065</b>	<b>36,034.35</b>	<b>23</b>	<b>39.45</b>	<b>28</b>	<b>7.13</b>	<b>4</b>	<b>-4.87</b>	<b>19</b>	<b>41.71</b>	<b>4.09</b>

### Summary:

1. There were 23 new SINCs approved by the SINC panel during 2015-16.
2. There were 4 SINCs approved for deletion by the SINC panel during 2015-16.
3. See individual District tables for details of new and deleted SINCs and major amendments to SINCs.

### Sharing information about Hampshire's wildlife

The Hampshire Biodiversity Information Centre Partnership includes local authorities, government agencies, wildlife charities and biological recording groups.



## 7. SINC in Positive Management (SD 160) - Not reported for 2015-16

Sharing information about Hampshire's wildlife

The Hampshire Biodiversity Information Centre Partnership includes local authorities, government agencies, wildlife charities and biological recording groups.

## 8 Changes in Notable Species Status over the period 2005-2015

### Background

The Hampshire Biodiversity Information Centre (HBIC) has been tasked with compiling data on status and distribution trends for a representative sample of 50 of Hampshire's notable species.

The original core output indicator as previously requested in government guidance on local authority performance was to measure change in status of species as a result of impact from planning and development. This is no longer deemed obtainable as the majority of change is due to on-going and cumulative impacts of agricultural practice, climate, urbanisation, and disturbance from recreation etc., and HBIC does not have the resources to unpick these pressures and attribute change in status of any of the 50 chosen species in terms of impact from development, except as anecdotal evidence.

### Selection of Species

The 50 Hampshire Notable species cover a broad range of taxonomic groups and are representative of the various habitat types present in Hampshire, covering both rural and urban areas, and with relevance to all local authorities.

Following consultation in 2006 with various statutory agencies, local authorities and a number of species recording groups in Hampshire, an agreed list of 50 notable species was drawn up and is presented in Table 6A below. Of the 50 species 30 are UK Priority species and are listed on S41 of the NERC Act 2006, the remainder on the Hampshire Biodiversity Action Plan list. Rarer species were excluded on the basis they have such a restricted distribution that their relevance to the reporting process is fairly limited. The bias towards vascular plants, birds and Lepidoptera reflects the large data-sets that already exist for these groups and the ongoing programme of data acquisition. Furthermore, it is well documented that these groups are sensitive indicators of environmental change, and are being used by Government agencies and various NGOs for their reporting purposes.

### Criteria for Selection

The criterion for selection of individual species was derived with the following conditions in mind:

1. Individual species must be on the Hampshire Notables list.
2. The list of 50 species should be representative of a wide range of taxonomic groups.
3. The species list should be representative of UK Priority habitats in Hampshire.
4. Species chosen should have a reasonable distribution (i.e. not just one or two sites)
5. A significant proportion of species chosen should be found in each District.
6. Species chosen should be sensitive to change (+ve/-ve, planning, management, climate etc.)
7. Species selected are primarily those for which good data exists and can be obtained either annually, or through periodic (e.g. 3 year/ 5 year) survey programme
8. A good number of the selected species should be flagship species with wide public interest.

## Status of the 50 Species

For consistency, the status categories for each species used for annual reporting matches those categories already in use elsewhere, particularly by Defra for national reporting:

- Increasing
- Stable
- Declining (slowing)
- Declining (continuing/accelerating)
- Decline (possibly stabilising? At low level?)
- Fluctuating/ no clear trend
- Lost
- Unknown/insufficient data

In 2006, through a process of consultation with the various species recording groups in Hampshire, the Hampshire Biodiversity Information Centre (HBIC) compiled a baseline set of statistics for change in status (1995-2005) for the 50 species shown in Table 8 (fifth column).

HBIC have reported annually thereafter, although the reporting on changing status of a species on an annual basis may have seemed questionable, since all species have annual fluctuations linked with the weather, population cycles and other factors. Nevertheless, the evaluation of change (per year) is looking over the previous 10 year period such that the trend of a given species over the previous 10 year period up to the given year would be reported for that year. In cases where major surveys for a particular species are repeated in a comprehensive manner at say 5-year intervals rather than every year, the annually reported trend would be that based on the most recent complete survey.

However since 2013 it has been decided to report back every 5 years on the basis that it was too difficult to pick out long term trends in population numbers against short term impacts such as extra cold winters, very wet spring etc. particularly for some of the more unrecorded species.

**So, for the year to 31 March 2015 the change in status of the 50 species is as reported for the 2002 – 2012 period, assessed in 2013**, and summarised in Table 8 (penultimate column). From this table the percentage of species in each of the categories is calculated and shown as pie charts in section 8.3.

**NB** Those trends shown in [ ] brackets are where HBIC have made a judgment based on available data or on previous judgments.

## Distribution of the 50 Species (by District)

**See Table 9. A new analysis has been done of all 2005-2015 records where available..**

Most Districts have gained 1-2 species, possibly more due to increased recording effort or adding 'incidental' sightings but could also be due to an increase in distribution through positive conservation management and/or more favorable climatic conditions. Further analysis of individual records would be required.

## 8.1 Population Trends of the 50 Hampshire Notable Species

Table 8 : Population Trends of Hampshire Notable Species (N = 50) from 2004 to 2014

† UK Priority Species (S41 NERC Act)

Scientific name	Common name	Group	HBAP (Vol.2) 2000	Trend 1995-2005 (assessed 2006)	Trend 2000-2010 (assessed 2011)	Trend 2001-2011 (Assessed 2012)	Trend 2002-2012 (assessed 2013)	Trend 2005-2015
<i>Triturus cristatus</i> †	great crested newt	Amphibian	Decline	Decline	Decline**	[Decline**]	Decline** <sup>1</sup>	As for 2012-2012
<i>Bombus humilis</i> †	brown-band. carder bee	Bee	Decline	Unknown	[Increase]	[Increase]	[Increase]	“
<i>Lucanus cervus</i> †	stag beetle	Beetle	Decline	Stable	[Stable]	[Stable]	[Stable]	“
<i>Alauda arvensis</i> †	skylark	Bird	Decline	Decline*	Stable	Stable	Decline	“
<i>Branta b. bernicla</i> †	dark-bellied brent goose	Bird	Stable	Decline*	Decline	Decline	Stable	“
<i>Caprimulgus europ.</i> †	nightjar	Bird	Stable	Increase	Stable	Stable	Stable	“
<i>Lullula arborea</i> †	woodlark	Bird	Increasing	Increase	Stable	Increase	Stable	“
<i>Luscinia megarhyn.</i>	nightingale	Bird	Decline	Decline?	Decline	Decline	Decline	“
<i>Milaria calandra</i> †	corn bunting	Bird	Rapid Decline	Decline**	Decline	Decline	Decline	“
<i>Perdix perdix</i> †	grey partridge	Bird	Rapid Decline	Decline**	Decline	Stable	Decline	“
<i>Pyrrhula pyrrhula</i> †	bullfinch	Bird	Decline	Stable	Stable	Stable	Decline	“
<i>Streptopelia turtur</i> †	turtle dove	Bird	Rapid Decline	Decline**	Decline	Decline	Decline	“
<i>Sylvia undata</i>	Dartford warbler	Bird	Stable	Increase	Decline	Decline	Increase <sup>2</sup>	“
<i>Tringa totanus</i>	redshank	Bird	Rapid Decline	Decline**	Decline	Stable	Decline	“
<i>Vanellus vanellus</i> †	lapwing	Bird	Rapid Decline	Stable	Decline	Decline	Decline	“
<i>Argynnis paphia</i>	silver-washed fritillary	Butterfly	Stable	Stable	Increase	[Stable]	[Increase] <sup>3</sup>	“
<i>Cupido minimus</i> †	small blue	Butterfly	Rapid Decline	Decline*	Decline*	Decline*	[Decline*]	“

<sup>1</sup> The national status of Great Crested Newt is still thought to be **Decline (continuing)** and that this still applies on a county level.

<sup>2</sup> Dartford Warbler was shown as declining because of the 95% reduction in its population in the Thames Basin and Wealden Heaths as a result of the recent cold winters. Prior to that it was increasing and is now showing a slow recovery from a low base in the North East of the county.

<sup>3</sup> Source UK Butterfly Monitoring Scheme

Scientific name	Common name	Group	HBAP (Vol.2) 2000	Trend 1995-2005 (assessed 2006)	Trend 2000-2010 (assessed 2011)	Trend 2001-2011 (Assessed 2012)	Trend 2002-2012 (assessed 2013)	Trend 2005-2015
<i>Hamearis lucina</i> †	Duke of Burgundy	Butterfly	Decline	Decline**	Decline*	Decline*	[Decline*]	As for 2012-2012
<i>Hesperia comma</i>	silver-spotted skipper	Butterfly	Stable	Increase	Fluctuating <sup>4</sup>	Fluctuating	[Stable]	“
<i>Lysandra coridon</i>	chalkhill blue	Butterfly	Decline	Fluctuating	Fluctuating	Fluctuating	{Stable}	“
<i>Plebejus argus</i> †	silver-studded blue	Butterfly	Decline	Stable	Stable	Stable <sup>5</sup>	[Stable]	“
<i>Gammarus insensibilis</i> †	lagoon sand shrimp	Crustacean	Decline	Unknown	Unknown	Unknown <sup>6</sup>	[Unknown]	“
<i>Coenagrion mercuriale</i> †	southern damselfly	Dragonfly	Stable	Stable	Stable	[Stable]	[Stable]	“
<i>Asilus crabroniformis</i> †	hornet robberfly	Fly	Decline	Stable	[Stable]	[Stable]	[Stable]	“
<i>Carex divisa</i> †	divided sedge	Flw Plant	Stable	Stable	[Stable]	Stable	Stable	“
<i>Chamaemelum nobile</i> †	chamomile	Flw Plant	Decline	Stable	[Stable]	Stable	Stable	“
<i>Epipactis phyllanthes</i>	green flowered helleborine	Flw Plant	Decline	Stable	[Decline?]	Decline	Decline	“
<i>Gentiana pneumon.</i>	marsh gentian	Flw Plant	Decline	Stable	[Unknown]	Fluctuating	Fluctuating	“
<i>Juniperus communis</i> †	juniper	Flw Plant	Decline	Decline*	[Decline]	Decline	Decline	“
<i>Lithospermum arvense</i>	corn gromwell	Flw Plant	Rapid Decline	Decline*	[Decline]	Decline	Decline	“
<i>Orchis morio</i>	green-winged orchid	Flw Plant	Rapid Decline	Decline*	[Decline]	Decline	Decline	“
<i>Pulicaria vulgaris</i> †	small fleabane	Flw Plant	Stable	Stable	[Decline]	Fluctuating	Fluctuating	“
<i>Pulmonaria longifolia</i>	narrow leaved lungwort	Flw Plant	Decline	Stable	[Decline]	Decline	Decline	“
<i>Oenanthe fluviatilis</i>	river water-dropwort	Flw Plant	Rapid Decline	Stable	[Decline]	Decline	Decline*	“
<i>Thesium humifusum</i>	bastard toadflax	Flw Plant	Decline	Stable	[Stable]	Stable	Stable	“

<sup>4</sup> Following range expansion and recolonisation of several new sites in the late 1990s, the Silver-spotted Skipper has had mixed fortunes over recent years. Warm, wet summers and a decline in rabbit pressure at several key sites resulted in increased turf heights in late summer leading to sub-optimal conditions for this short-turf specialist.

<sup>5</sup> Whilst the overall situation for Silver-studded Blue appears stable, there are growing concerns that overgrazing in parts of the New Forest (particularly round the edges) is causing a decline in numbers and local population loss in smaller habitat patches.

<sup>6</sup> The last comprehensive survey of the Hampshire lagoons was in 1997, which noted lagoon sand shrimp is several lagoons. Since then a paucity of data means their population trends can not be identified. The lagoons would benefit from another thorough survey.

Scientific name	Common name	Group	HBAP (Vol.2) 2000	Trend 1995-2005 (assessed 2006)	Trend 2000-2010 (assessed 2011)	Trend 2001-2011 (Assessed 2012)	Trend 2002-2012 (assessed 2013)	Trend 2005-2015
<i>Zostera marina</i>	eelgrass	Flw Plant	Decline	Unknown	Stable	[Stable]	[Stable] <sup>7</sup>	As for 2012-2012
<i>Poronia punctata †</i>	nail fungus	Fungi	Stable	Stable	Stable	Stable	Stable	“
<i>Gomphocerippus rufus</i>	rufous grasshopper	Grasshopper	Stable	Unknown	[Unknown]	[Unknown]	[Unknown]	“
<i>Arvicola terrestris †</i>	water vole	Mammal	Rapid Decline	Stable	Stable	Stable	[Stable]	“
<i>Eptesicus serotinus</i>	Serotine bat	Mammal	Stable	Decline**	[Decline]	Stable	Stable <sup>8</sup>	“
<i>Lepus europaeus †</i>	brown hare	Mammal	Decline	Stable	Stable	Stable	[Stable]	“
<i>Muscardinus avellan †</i>	dormouse	Mammal	Decline	Stable	Stable	Stable	[Stable]	“
<i>Vertigo moulinsiana †</i>	Desmoulin's whorl snail	Molluscs	Stable?	Stable	Stable	Stable	Stable	“
<i>Apoda limacodes</i>	festoon	Moth	Decline	Increase	[stable]	Stable	Stable	“
<i>Catocala promissa †</i>	light crimson underwing	Moth	Stable	Stable	[Stable]	Stable	Stable	“
<i>Hemaris fuciformis</i>	broad-bord. bee hawk	Moth	Decline	Stable	[Stable]	Fluctuating	Fluctuating	“
<i>Hypena rostralis</i>	buttoned snout	Moth	Decline	Increase	[Stable]	Stable	Stable	“
<i>Minoa murinata †</i>	drab looper	Moth	Decline	Stable	[Stable]	Stable	Stable	“
<i>Shargacucullia lychnitis †</i>	striped lychnis	Moth	Stable	Stable	[Stable]	Stable	Stable	“
<i>Coronella austriaca †</i>	smooth snake	Reptile	Decline	Stable	Unknown	[Unknown]	Unknown <sup>9</sup>	“

**Notes:** 1. Trends given in brackets indicate assessment by HBIC. 2. Species in decline between 2002-2012 are highlighted in orange.  
**Status categories:** **Increase**, **Stable**, **Decline\*** (slowing), **Decline\*\*** (continuing/accelerating), **Decline?** (possibly stabilising), **Fluctuating** (no clear trend), **Lost** (pre-BAP publication), **Lost** (since BAP publication), **Unknown** (insufficient data)

<sup>7</sup> Repeat surveys on selected eelgrass beds carried out by HIWWT and the EA suggest these beds are stable. However, there are thought to be local declines in some areas as a result of physical disturbance from fishing activity, which has been highlighted by the Defra European Marine Sites Risk Review for the Solent EMS.

<sup>8</sup> Taken from the Bat Conservation Trust Population trends data for 2012 – and to be treated with caution due to small sample size

<sup>9</sup> New Forest Reptile Monitoring Group will be running a surveillance project to assist with regional conservation status from 2015 (pilot started 2014).

## 8.2 Distribution of the 50 Hampshire Notable Species

Table 9 : Distribution of Hampshire Species (N=50) from 2004 to 2014

Scientific name	Common name	Group	District														
			B	EH	E	F	G	Ht	Hv	ND	NP	P	R	S	T	W	
<i>Triturus cristatus</i>	great crested newt	Amphib	✓	✓	✓	✓	✓	✓	✓		✓	✓	✓		✓	✓	✓
<i>Bombus humilis</i> *	brown-band carder bee	Bees		x		✓	✓			x	x	✓	✓		x	x	✓
<i>Lucanus cervus</i>	stag beetle	Beetles	✓	✓	✓	✓	✓	✓	✓	✓	✓	✓	✓	✓	✓	✓	✓
<i>Alauda arvensis</i>	skylark	Birds	✓	✓	✓	✓	✓	✓	✓	✓	✓	✓	✓	✓	✓	✓	✓
<i>Branta bernicla bernicla</i>	dark-bellied brent goose	Birds		✓	✓	✓	✓			✓	✓	✓	✓		✓	✓	✓
<i>Caprimulgus europ.</i>	nightjar	Birds	✓	✓	✓	✓	✓	✓	✓	✓	✓		✓	✓	✓	✓	✓
<i>Lullula arborea</i>	woodlark	Birds	✓	✓	✓	✓	✓	✓	✓	✓	✓	✓	✓	✓	✓	✓	✓
<i>Luscinia megarhynchos</i>	nightingale	Birds	x	✓	✓	✓	✓	✓	✓	✓	✓	✓	✓	✓	✓	✓	✓
<i>Emberizac alandra</i>	corn bunting	Birds	✓	✓		✓			✓	✓	✓	✓				✓	✓
<i>Perdix perdix</i>	grey partridge	Birds	✓	✓	✓	✓			✓	✓	✓	✓		✓	✓	✓	✓
<i>Pyrrhula pyrrhula</i>	bullfinch	Birds	✓	✓	✓	✓		✓	✓	✓	✓	✓	✓	✓	✓	✓	✓
<i>Streptopelia turtur</i>	turtle dove	Birds	✓	✓	✓	✓	✓	✓	✓	✓	✓	✓	✓	✓	✓	✓	✓
<i>Sylvia undata</i>	Dartford warbler	Birds	✓	✓	✓	✓	✓	✓	✓	✓	✓	✓	✓	✓	✓	✓	✓
<i>Tringa totanus</i>	redshank	Birds	✓	✓	✓	✓	✓	✓	✓	✓	✓	✓	✓		✓	✓	✓
<i>Vanellus vanellus</i>	lapwing	Birds	✓	✓	✓	✓	✓	✓	✓	✓	✓	✓	✓	✓	✓	✓	✓
<i>Argynnis paphia</i>	silver-washed fritillary	Butterflies	✓	✓	✓	✓	✓	✓	✓	✓	✓	✓	✓	✓	✓	✓	✓
<i>Cupido minimus</i>	small blue	Butterflies	✓	✓	✓	✓	✓	✓		✓	✓	✓	✓			✓	✓
<i>Hamearis lucina</i>	Duke of Burgundy	Butterflies	✓	✓							✓	✓				✓	✓
<i>Hesperia comma</i>	silver-spotted skipper	Butterflies		✓							✓		✓			✓	✓
<i>Lysandra coridon</i>	chalkhill blue	Butterflies	✓	✓	✓	✓	✓	✓	✓	✓		✓	✓	✓	✓	✓	✓
<i>Plebejus argus</i>	silver-studded blue	Butterflies	✓	✓	✓	✓	✓		✓		✓	✓	✓	✓			✓
<i>Gammarus insensibilis</i> *	lagoon sand shrimp	Crustacea						✓			✓	✓					
<i>Coenagrion mercuriale</i>	southern damselfly	Dragonfly			✓						✓	✓				✓	✓
<i>Asilus crabroniformis</i> *	hornet robberfly	Flies		✓							✓	✓	✓			✓	✓
<i>Carex divisa</i>	divided sedge	Flw Plants		✓		✓	✓			✓	✓	✓	✓		✓		

### Sharing information about Hampshire's wildlife

The Hampshire Biodiversity Information Centre Partnership includes local authorities, government agencies, wildlife charities and biological recording groups.

			B	EH	E	F	G	Ht	Hv	ND	NP	P	R	S	T	W
<i>Chamaemelum nobile</i>	chamomile	Flw Plants	x	✓			✓	✓	✓	✓	✓	✓	✓		✓	
<i>Epipactis phyllanthes</i>	green flow. helleborine	Flw Plants	✓	✓	✓			✓		✓			✓	✓	✓	✓
<i>Gentiana pneumon.</i>	marsh gentian	Flw Plants						✓			✓				✓	
<i>Juniperus communis</i>	juniper	Flw Plants	✓	✓		✓				✓	✓	✓			✓	✓
<i>Lithospermum arvense</i>	corn gromwell	Flw Plants	✓	✓											✓	✓
<i>Oenanthe fluviatilis</i>	river water-dropwort	Flw Plants			✓			✓			✓				✓	✓
<i>Orchis morio</i>	green-winged orchid	Flw Plants	✓	✓	✓		✓		✓	✓	✓	x	✓	✓	✓	✓
<i>Pulicaria vulgaris</i>	small fleabane	Flw Plants	✓							✓	✓					
<i>Pulmonaria longifolia</i>	narrow leaved lungwort	Flw Plants								✓	✓					
<i>Thesium humifusum</i>	bastard toadflax	Flw Plants				✓			✓	✓		✓			✓	✓
<i>Zostera marina/noltii</i>	eelgrass	Flw Plants				✓	✓		✓	x	✓	✓				
<i>Poronia punctata</i>	nail fungus	Fungi									✓					
<i>Gomphocerippus rufus</i>	rufous grasshopper*	Grasshopper		✓												
<i>Arvicola terrestris</i>	water vole	Mammals	✓		✓	✓	✓	✓	✓	✓	✓	✓		✓	✓	✓
<i>Eptesicus serotinus</i>	Serotine bat	Mammals	✓	✓	✓	✓		✓	✓	✓	✓	x	✓	✓	✓	✓
<i>Lepus europaeus</i>	brown hare	Mammals	✓	✓	✓			✓		✓	✓				✓	✓
<i>Muscardinus avellan.</i>	dormouse	Mammals	✓	✓	✓	✓		✓	✓	✓				✓	✓	✓
<i>Vertigo moulinsiana</i>	Desmoulin's whorl snail*	Molluscs	✓							✓	✓				x	x
<i>Apoda limacodes</i>	festoon	Moths	✓	✓	✓	✓	✓	✓	✓	✓	✓	✓	✓	✓	✓	✓
<i>Catocala promissa</i>	light crimson underwing	Moths			✓					✓	✓				✓	
<i>Hemaris fuciformis</i>	broad-bord. bee hawk	Moths	✓	✓			✓	✓		✓	✓				✓	✓
<i>Hypena rostralis</i>	buttoned snout	Moths	✓	✓	✓	✓		✓	✓	✓	✓	✓	✓	✓	✓	✓
<i>Minoa murinata</i>	drab looper	Moths	✓					✓		✓					✓	✓
<i>Shargacucullia lychnitis</i>	striped lychnis	Moths	✓	✓		✓		✓	✓					✓	✓	✓
<i>Coronella austriaca</i>	smooth snake	Reptiles		✓				✓		✓	✓					
		<b>Total</b>	<b>32</b>	<b>36</b>	<b>28</b>	<b>29</b>	<b>24</b>	<b>30</b>	<b>27</b>	<b>42</b>	<b>41</b>	<b>28</b>	<b>18</b>	<b>24</b>	<b>39</b>	<b>38</b>
		<b>Prev.total</b>	<b>33</b>	<b>37</b>	<b>25</b>	<b>26</b>	<b>20</b>	<b>30</b>	<b>25</b>	<b>42</b>	<b>40</b>	<b>27</b>	<b>15</b>	<b>22</b>	<b>41</b>	<b>36</b>

1. '✓' means the species occurs in the District (2005-2015), from records held by HBIC and those received from the species groups. 'Occurs' means possible/confirmed breeding or regular sightings in the area. Irregular or transient records are discounted where possible or given '✓' where single records. '✓' means new record and 'x' means no longer falls within reporting period.
2. B = Basingstoke & Deane, EH = East Hampshire, E = Eastleigh, F = Fareham, G = Gosport, Ht = Hart, Hv = Havant, ND = New Forest District, NP = New Forest NPA, P = Portsmouth, R = Rushmoor, S = Southampton, T = Test Valley, W = Winchester

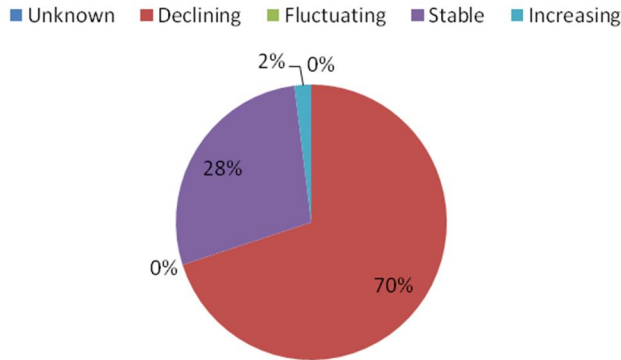
### Sharing information about Hampshire's wildlife

The Hampshire Biodiversity Information Centre Partnership includes local authorities, government agencies, wildlife charities and biological recording groups.

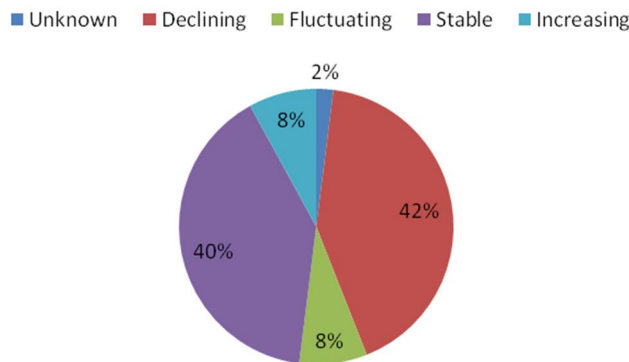


### 8.3 Summary of trends for the 50 Hampshire Notable Species – assessed in 2013 for the period 2002 – 2012. To be updated 2007-2017

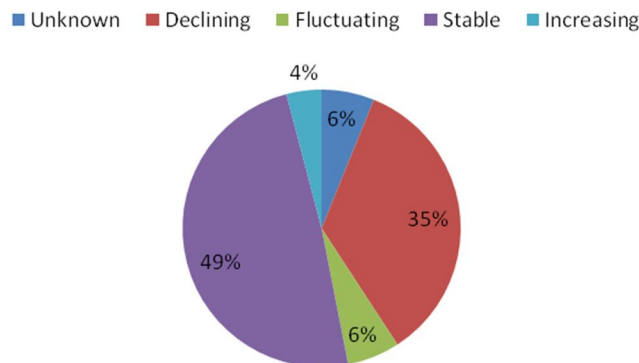
#### 1. Assessed from Hampshire BAP 2000



#### 2. Assessed trends for 1995-2005



#### 3. Assessed trends for 2002-2012



The last decade has seen rates of declines slowing for many of Hampshire's notable species. There are, however, concerns that "Stable" for some species means stabilised at low (still vulnerable) levels, rather than stabilising at a higher (more sustainable) level.

Since the last report for 2001-2011 the number of species showing a **decline** has increased from 32% to 35%, whilst several species have remained in the 'unknown' category where there is uncertainty due to lack of data.

The figures must be treated with caution as whilst it might appear that some species might be expanding in range or increasing in number sometimes it is due to increased recorder effort over a period of time, although this is taken into account where known.

**The next review will be undertaken in 2018 for the 2007-2017 period.**

## 09 Basingstoke and Deane Borough Council

### 09.1 Priority habitats

Table 09A: Extent of Priority habitats (as at 31st March 2016)

Priority Habitat	Comments on Completeness	Combined Hants area (ha)	% of Combined Hants area	BDBC area (ha)	% of BDBC area	2014/15 BDBC area (ha)	Change in area (ha)
<b>Grasslands</b>							
<b>Lowland Calcareous Grassland</b>	Comprehensive	2,097	0.54	217	0.34	246	-29
<b>Lowland Dry Acid Grassland</b>	Comprehensive. Some overlap with Lowland Heath	3,681	0.95	25	0.04	25	
<b>Lowland Meadows</b>	Comprehensive. Some overlap with Coastal and Floodplain Grazing Marsh and with Wood-Pasture and Parkland.	1,480	0.38	157	0.25	165	-8
<b>Purple Moor Grass and Rush Pastures</b>	Comprehensive. Some overlap with Coastal and Floodplain Grazing Marsh.	1,480	0.38	34	0.05	34	
<b>Heathlands</b>							
<b>Lowland Heathland</b>	Comprehensive. Some overlap with Lowland Dry Acid Grassland.	11,813	3.04	180	0.28	177	3
<b>Woodland, wood-pasture and parkland</b>							
<b>Lowland Beech and Yew Woodland</b>	Not comprehensive. Ongoing work to distinguish from Lowland Mixed Deciduous Woodland in old surveys.	254	0.07	9	0.01	3	6
<b>Lowland Mixed Deciduous Woodland</b>	Ongoing work as all ancient/ non ancient woodland has been included yet not all has been surveyed for qualifying NVC types.	36,006	9.27	6,231	9.83	6,426	-195
<b>Wet Woodland</b>	Fairly comprehensive. Areas will exist in LMDW that are not yet surveyed for qualifying types.	2,041	0.53	417	0.66	419	-2
<b>Wood-Pasture and Parkland</b>	Not comprehensive. Further work needed to classify this habitat within historic parkland.	5,518	1.42	506	0.80	506	
<b>Arable, orchards and hedgerows</b>							
<b>Arable Field Margins</b>	Incomplete. Figures only show SINC's on arable land designated for rare arable plants.	[91.72]	[0.02]	[26.33]	[0.04]	[28]	[-1.64]

Priority Habitat	Comments on Completeness	Combined Hants area (ha)	% of Combined Hants area	BDBC area (ha)	% of BDBC area	2014/15 BDBC area (ha)	Change in area (ha)
<b>Hedgerows</b>	No comprehensive information for Priority hedgerows. All hedgerows mapped as linear features (km)	[16,457]		[2,721]			
<b>Traditional Orchards</b>	Work to be undertaken to incorporate areas recently identified by PTES under contract to NE.		0.00				
<b>Open waters</b>							
<b>Ponds</b>	No comprehensive data yet available.						
<b>Eutrophic Standing Waters</b>	No comprehensive information yet available.	46	0.01		0.00		
<b>Rivers</b>	Incomplete data. Approx. figures for Chalk Rivers only calculated from EA's River GIS layer (km)...	[634]		[101]		[101]	[0]
<b>Wetlands</b>							
<b>Coastal and Floodplain Grazing Marsh</b>	Further work is needed to identify all qualifying grazing marsh. Some overlap with Lowland Meadows and with Purple Moor Grass and Rush Pastures.	9,561	2.46	819	1.29	822	-3
<b>Lowland Fens</b>	Comprehensive.	1,899	0.49	3	0.00	3	
<b>Reedbeds</b>	Not comprehensive	279	0.07	2	0.00	2	
<b>Total</b>		<b>81,862</b>	<b>21</b>	<b>8,600</b>	<b>13.57</b>	<b>8,828</b>	<b>-228</b>

### Summary:

1. Because of re-surveying and re-interpretation the area of Lowland Mixed Deciduous Woodland and Lowland Meadows has decreased. Areas particularly affected include the Bramley training area, Crabtree plantation south of Basingstoke Common and Sidown Hill (woodland) and areas south of Burghclere, north of Burghclere and south of Tadley (meadows).

### Notes:

1. Coastal and Marine categories are not displayed (as they are not relevant for this district) but the combined total area for Hampshire includes these categories.
2. The Hampshire and district totals of Priority habitat are the sum of the individual Priority habitat types (excluding Arable Field Margins and Rivers). This is not the total area of land covered by Priority habitat within Hampshire and each district because some Priority habitat types overlap and hence are double counted (e.g. Coastal and Floodplain Grazing Marsh may overlap Lowland Meadows or Purple Moor Grass and Rush Pastures).
3. Because the total area of Priority habitat may include areas where habitats overlap the % of the district area covered by Priority habitat may be slightly over-exaggerated.
4. Minor changes in area might not always reflect real change, but are results of a rounding of figures.

### Sharing information about Hampshire's wildlife

The Hampshire Biodiversity Information Centre Partnership includes local authorities, government agencies, wildlife charities and biological recording groups.



## 09.2 Nature Conservation Designations

**Table 09B: Extent of Nature Conservation Designations (as at 31st March 2016)**

Designation	Combined Hants sites (no)	Combined Hants area (ha)	Combined Hants area (%)	BDBC sites (no)	BDBC area (ha)	BDBC area (%)	2014/15 BDBC area (ha)	Change (ha)
LNR	66	2,366	1	7	245	0.39	245	0
NNR	11	2,173	1	1	23	0.04	23	0
RAMSAR	6	36,993	10					
SAC	13	37,095	10					
SPA	10	41,797	11					
SSSI	131	50,560	13	20	806	1.27	806	0
Stat Sites Combined	237	51,345	13	28	861	1.36	861	0
SINC	4,065	36,034	9	796	6,180	9.75	6,175	5

### Summary:

1. There were no changes to statutory sites during 2015/16.
2. For details of any new, amended and deleted SINC's see tables 09G, H & I.

### Notes:

1. The areas total for 'Statutory sites combined' may not equal the total for each of the individual statutory site designations because there is often an overlap between statutory designations.

**Table 09C: Statutory Designated Sites (as at 31st March 2016)**

Designation	Site Name	Area (ha) within district
LNR	Chineham Woods	9.17
LNR	Daneshill Park Woods	4.43
LNR	Herbert Plantation	25.60
LNR	Pamber Forest	190.13
LNR	Popley Ponds	1.44
LNR	The Mill Field	11.68
LNR	Up Nately	2.83
NNR	Ashford Hill	23.39
SSSI	Ashford Hill Woods and Meadows	141.55
SSSI	Bere Mill Meadows	10.27
SSSI	Burghclere Beacon	80.67
SSSI	Butter Wood	45.31
SSSI	Duncroft Farm Pit	0.12
SSSI	East Aston Common	0.53
SSSI	Greenham and Crookham Commons	0.46
SSSI	Greywell Tunnel ( Basingstoke Canal )	0.11
SSSI	Highclere Park	69.58
SSSI	Hook Common and Bartley Heath	6.55
SSSI	Ladle Hill	10.50
SSSI	Mapledurwell Fen	0.42
SSSI	Micheldever Spoil Heaps	26.73
SSSI	Old Burghclere Lime Quarry	4.51
SSSI	Pamber Forest and Silchester Common	341.72
SSSI	River Test	41.86
SSSI	Ron Ward's Meadow with Tadley Pastures	11.51
SSSI	Sidley Wood	11.72
SSSI	Stanford End Mill and River Loddon	1.84
SSSI	West Woodhay Down	0.46

### 09.3 Priority Habitats within Designated Sites

**Table 09D: Extent of Priority habitats within Designated Sites (as at 31st March 2016)**

Designated Sites	Combined Hants area (ha)	Combined Hants area (%)	BDBC (ha)	BDBC area (%)	2014/15 BDBC area (ha)	Change area (ha)
<b>Statutory sites combined</b>	38,147	45.3	646	7.5	648	-2
<b>SINC</b>	21,363	25.4	4,195	48.8	4,303	-108
<b>Total combined</b>	<b>58,732</b>	<b>69.7</b>	<b>4,810</b>	<b>55.9</b>	<b>4,920</b>	<b>-110</b>

#### Summary:

1. Approx. 56% of Priority habitat in Basingstoke & Deane is within designated sites (same as in previous years).

#### Notes:

1. Total Priority habitat in Basingstoke & Deane as at 31st March 2016 = 8,600 ha.

## 09.4 Condition of Sites of Special Scientific Interest (SSSIs)

Table 09E: Conditions of Sites of Special Scientific Interest (SSSIs) (as at 31st March 2016)

Condition	Combined Hants area (ha)	Combined Hants area (%)	BDBC area (ha)	BDBC area (%)	2014/15 BDBC area (ha)	Change in area (ha)
Favourable	21,341.14	42.2	209.80	26.02	202.52	7.28
Unfavourable Recovering	27,745.85	54.9	561.27	69.60	568.53	-7.26
Unfavourable no Change	885.04	1.8	32.46	4.02	32.46	0.00
Unfavourable Declining	564.17	1.1	2.87	0.36	2.87	0.00
Part Destroyed	6.34	0.0				
Destroyed	17.44	0.0				
<b>Grand Total</b>	<b>50,561.98</b>	<b>100.0</b>	<b>806.39</b>	<b>100.0</b>	<b>806.37</b>	<b>0.02</b>

### Notes:

1. Although data has been provided by Natural England the total amount of SSSI may differ from NE figures because NE do not always assign a portion of an SSSI to the correct District where the majority of that SSSI occurs within another District, whereas HBIC are able to clip the SSSI management units directly to the District boundaries.

## 09.5 SINC changes observed and recorded

Table 09F: Extent of changes to SINCS observed and recorded between 1st April 2015 and 31st March 2016

SINCS	Hants sites (no)	Hants sites (area)	BDBC sites (no)	BDBC sites (area)
<b>Total sites (2014/15)</b>	4,046	35,992.64	794	6,174.63
<b>New Sites</b>	23	39.45	2	6.16
<b>Amended Sites</b>	28	7.13	3	-0.53
<b>Deleted sites</b>	4	-4.87		
<b>Total sites (2015/16)</b>	4,065	36,034.35	796	6,180.26
<b>Net change</b>	<b>19</b>	<b>41.71</b>	<b>2</b>	<b>5.63</b>
<b>% change in area</b>		4.09		0.09

### Notes:

1. Data extracted from HBIC SINC layer between 1st April 2015 and 31st March 2016.
2. Incorporates the decisions from the November 2015 panel.

**Table 09G: New SINC approved between 1st April 2015 and 31st March 2016**

Site Ref	Site Name	New Size (ha)	New Criteria	Panel date
BD0808	St Mary's Churchyard, Kingsclere	0.47	2B	Nov 2015
BD0807	Buckskin Pitch and Putt Golf Course	5.69	2D	Nov 2015

**Table 09H: Deleted SINC approved between 1st April 2015 and 31st March 2016**

No SINC in Basingstoke and Deane Borough Council were deleted during 2015-2016.

**Table 09I: Major amendments to SINC between 1st April 2015 and 31st March 2016**

Site Ref	Site Name	Reason	Old Size (ha)	New Size (ha)	Old Criteria	New Criteria
BD0146	C67 Newbury Road, Litchfield	Lack of management	0.75	0.25		
BD0602	Mill Head Pond	New Survey or Information			5B	1Cii/5B
BD0225	U18 White Hill, Ecchinswell and Sydmonton	Data Correction/Reinterpretation	0.13	0.1	2D	2B

## 12 Fareham Borough Council

### 12.1 Priority habitats

Table 12A: Extent of Priority habitats (as at 31st March 2016)

Priority Habitat	Comments on Completeness	Combined Hants area (ha)	% of Combined Hants area	FBC area (ha)	% of FBC area	2014/15 FBC area (ha)	Change in area (ha)
<b>Grasslands</b>							
Lowland Calcareous Grassland	Comprehensive	2,097	0.54	17	0.22	18	-1
Lowland Dry Acid Grassland	Comprehensive. Some overlap with Lowland Heath	3,681	0.95	6	0.08	6	
Lowland Meadows	Comprehensive. Some overlap with Coastal and Floodplain Grazing Marsh and with Wood-Pasture and Parkland.	1,480	0.38	24	0.31	18	6
Purple Moor Grass and Rush Pastures	Comprehensive. Some overlap with Coastal and Floodplain Grazing Marsh.	1,480	0.38	4	0.05	2	2
<b>Heathlands</b>							
Lowland Heathland	Comprehensive. Some overlap with Lowland Dry Acid Grassland.	11,813	3.04	2	0.03	2	
<b>Woodland, wood-pasture and parkland</b>							
Lowland Beech and Yew Woodland	Not comprehensive. Ongoing work to distinguish from Lowland Mixed Deciduous Woodland in old surveys.	254	0.07				
Lowland Mixed Deciduous Woodland	Ongoing work as all ancient/ non ancient woodland has been included yet not all has been surveyed for qualifying NVC types. See also above.	36,006	9.27	455	5.85	460	-5
Wet Woodland	Fairly comprehensive. Areas will exist in LMDW that are not yet surveyed for qualifying types.	2,041	0.53	51	0.66	51	
Wood-Pasture and Parkland	Not comprehensive. Further work needed to classify this habitat within historic parkland.	5,518	1.42	12	0.15		12
<b>Arable, orchards and hedgerows</b>							
Arable Field Margins	Incomplete. Figures only show SINC's on arable land designated for rare arable plants.	[91,72]	[0.02]				
Hedgerows	No comprehensive information for Priority hedgerows. All hedgerows mapped as linear features (km)	[16,457]		[265]			



Priority Habitat	Comments on Completeness	Combined Hants area (ha)	% of Combined Hants area	FBC area (ha)	% of FBC area	2014/15 FBC area (ha)	Change in area (ha)
<b>Traditional Orchards</b>	Work to be undertaken to incorporate areas recently identified by PTES under contract to NE.		0.00		0.00		
<b>Open waters</b>							
<b>Ponds</b>	No comprehensive data yet available.						
<b>Eutrophic Standing Waters</b>	No comprehensive information yet available.	46	0.01				
<b>Rivers</b>	Incomplete data. Approx. figures for Chalk Rivers only calculated from EA's River GIS layer (km)...	[634]		[11]		[11]	[0]
<b>Wetlands</b>							
<b>Coastal and Floodplain Grazing Marsh</b>	Further work is needed to identify all qualifying grazing marsh from survey data. Some overlap with Lowland Meadows and with Purple Moor Grass and Rush Pastures.	9,561	2.46	345	4.43	345	
<b>Lowland Fens</b>	Comprehensive.	1,899	0.49				
<b>Reedbeds</b>	Not comprehensive	279	0.07	49	0.63	48	1
<b>Coastal</b>							
<b>Coastal saltmarsh</b>	EA data partly verified	869	0.22	30	0.39	34	-4
<b>Coastal Sand Dunes</b>	EA data partly verified	48	0.01		0.00		
<b>Coastal Vegetated Shingle</b>	Comprehensive	223	0.06	12	0.15	12	
<b>Intertidal mudflats</b>	EA data partly verified	4,418	1.14	270	3.47	270	
<b>Maritime Cliff and Slopes</b>	Comprehensive	43	0.01	1	0.01	1	
<b>Saline lagoons</b>	Comprehensive	55	0.01	1	0.01	1	
<b>Marine</b>							
<b>Seagrass beds</b>	Not comprehensive. Separate HWT data available	49	0.01				
<b>Total</b>		<b>81,862</b>	<b>21</b>	<b>1,279</b>	<b>16.44</b>	<b>1,268</b>	<b>11</b>

**Summary:** The additional 6ha Lowland meadow and 12ha Wood pasture/Parkland (overlapping) can be attributed to Hook Park surveyed in 2013.

**Notes:**

1. The Hampshire and district totals of Priority habitat are the sum of the individual Priority habitat types (excluding Arable Field Margins and Rivers). This is not the total area of land covered by Priority habitat within Hampshire and each district because some Priority habitat types overlap and hence are double counted (e.g. Coastal and Floodplain Grazing Marsh may overlap Lowland Meadows or Purple Moor Grass and Rush Pastures).

2. Because the total area of Priority habitat may include areas when habitats overlap the % of the district area covered by Priority habitat may be slightly over-exaggerated.
3. Minor changes in area might not always reflect real change, but are results of a rounding of figures.

## 12.2 Nature Conservation Designations

**Table 12B: Extent of Nature Conservation Designations (as at 31st March 2016)**

Designation	Combined Hants sites (no)	Combined Hants area (ha)	Combined Hants area (%)	FBC sites (no)	FBC area (ha)	FBC area (%)	2014/15 FBC area (ha)	Change (ha)
LNR	66	2,366	1	6	418	5.38	418	
NNR	11	2,173	1	1	120	1.54	120	
RAMSAR	6	36,993	10	2	540	6.94	540	
SAC	13	37,095	10	1	195	2.51	195	
SPA	10	41,797	11	2	527	6.77	527	
SSSI	131	50,560	13	6	563	7.24	563	
Stat Sites Combined	237	51,345	13	18	749	9.62	749	
SINC	4,065	36,034	9	109	611	7.85	610	1

### Summary:

1. There were no changes to statutory sites during 2015/16.
2. For details of any new, amended and deleted SINCs see tables 12G, H & I.
3. The figures do not include the marine pSPA "Solent and Dorset Coast".

### Notes:

1. The areas total for 'Statutory sites combined' may not equal the total for each of the individual statutory site designations because there is often an overlap between statutory designations.

**Table 12C: Statutory Designated Sites (as at 31st March 2016)**

Designation	Site Name	Area (ha) within district
LNR	Gull Coppice	5.62
LNR	Holly Hill Woodland Park	28.13
LNR	Hook with Warsash	251.37
LNR	Kites Croft	17.04
LNR	Titchfield Haven	92.95
LNR	Warsash Common	23.38
NNR	Titchfield Haven	119.62
Ramsar	Portsmouth Harbour	36.04
Ramsar	Solent & Southampton Water	504.26
SAC	Solent Maritime	195.35
SPA	Portsmouth Harbour	36.04
SPA	Solent & Southampton Water	490.90
SSSI	Downend Chalk Pit	4.36
SSSI	Lee-on-the Solent to Itchen Estuary	344.75
SSSI	Portsdown	6.31
SSSI	Portsmouth Harbour	36.04
SSSI	Titchfield Haven	134.49
SSSI	Upper Hamble Estuary and Woods	37.05

### 12.3 Priority Habitats within Designated Sites

**Table 12D: Extent of Priority habitats within Designated Sites (as at 31st March 2016)**

Designated Sites	Combined Hants area (ha)	Combined Hants area (%)	FBC (ha)	FBC area (%)	2014/15 FBC area (ha)	Change area (ha)
<b>Statutory sites combined</b>	38,147	45.3	580	45.3	575	5
<b>SINC</b>	21,363	25.4	395	30.8	386	9
<b>Total combined</b>	<b>58,732</b>	<b>69.7</b>	<b>899</b>	<b>70.2</b>	<b>886</b>	<b>13</b>

#### Summary:

1. Approx. 70% of Priority habitat in Fareham lies within designated sites.

#### Notes:

1. Total Priority habitat in Fareham as at 31st March 2016 = 1,279ha.

## 12.4 Condition of Sites of Special Scientific Interest (SSSIs)

**Table 12E: Conditions of Sites of Special Scientific Interest (SSSIs) (as at 31st March 2016)**

Condition	Combined Hants area (ha)	Combined Hants area (%)	FBC area (ha)	FBC area (%)	2014/15 FBC area (ha)	Change in area (ha)
Favourable	21,341.14	42.2	294.47	52.3	294.47	0.00
Unfavourable Recovering	27,745.85	54.9	263.80	46.9	263.88	-0.09
Unfavourable no Change	885.04	1.8	0.00	0.0	0.00	0.00
Unfavourable Declining	564.17	1.1	4.73	0.8	4.73	0.00
Part Destroyed	6.34	0.0				
Destroyed	17.44	0.0				
<b>Grand Total</b>	<b>50,561.98</b>	<b>100.0</b>	<b>563.00</b>	<b>100.0</b>	<b>563.09</b>	<b>-0.09</b>

### Notes:

1. Although data has been provided by Natural England the total amount of SSSI may differ from NE figures because NE do not always assign a portion of an SSSI to the correct District where the majority of that SSSI occurs within another District, whereas HBIC are able to clip the SSSI management units directly to the District boundaries.

## 12.5 SINC changes observed and recorded

**Table 12F: Extent of changes to SINCS observed and recorded between 1st April 2015 and 31st March 2016**

SINCS	Hants sites (no)	Hants sites (area)	FBC sites (no)	FBC sites (area)
<b>Total sites (2014/15)</b>	4,046	35,992.64	109	610.11
<b>New Sites</b>	23	39.45		
<b>Amended Sites</b>	28	7.13	1	0.61
<b>Deleted sites</b>	4	-4.87		
<b>Total sites (2015/16)</b>	4,065	36,034.35	109	610.72
<b>Net change</b>	<b>19</b>	<b>41.71</b>		<b>0.61</b>
<b>% change in area</b>		4.09		0.10

### Notes:

1. Data extracted from HBIC SINC layer between 1st April 2015 and 31st March 2016.
2. Incorporates the decisions from November 2015 panel.

## Table 12G: New SINCS approved between 1st April 2015 and 31st March 2016

No new SINCS in Fareham Borough Council were approved during 2015-2016.

Sharing information about Hampshire's wildlife

The Hampshire Biodiversity Information Centre Partnership includes local authorities, government agencies, wildlife charities and biological recording groups.



**Table 12H: Deleted SINC approved between 1st April 2015 and 31st March 2016**

No SINC in Fareham Borough Council were deleted during 2015-2016.

**Table 12I: Major amendments to SINC between 1st April 2015 and 31st March 2016**

Site Ref	Site Name	Reason	Old Size (ha)	New Size (ha)	Old Criteria	New Criteria
FA0036	Bushy Land*	Lack of management	3.38	3.99	1A/2D	1A/1B

\*2D removed as grassland interest now negligible. Strip of NVC Ww8 woodland along north-western boundary added as, although not ancient, is of sufficient age and quality to enhance the site, with AWIs recorded throughout; 1B added to reflect this area.

## 15 Havant Borough Council

### 15.1 Priority habitats

Table 15A: Extent of Priority habitats (as at 31st March 2016)

Priority Habitat	Comments on Completeness	Combined Hants area (ha)	% of Combined Hants area	HVBC area (ha)	% of HVBC area	2014/15 HVBC area (ha)	Change in area (ha)
<b>Grasslands</b>							
Lowland Calcareous Grassland	Comprehensive	2,097	0.54	5	0.06	6	-1
Lowland Dry Acid Grassland	Comprehensive. Some overlap with Lowland Heath	3,681	0.95	21	0.27	21	
Lowland Meadows	Comprehensive. Some overlap with Coastal and Floodplain Grazing Marsh and with Wood-Pasture and Parkland.	1,480	0.38	55	0.70	65	-10
Purple Moor Grass and Rush Pastures	Comprehensive. Some overlap with Coastal and Floodplain Grazing Marsh.	1,480	0.38	5	0.06	5	
<b>Heathlands</b>							
Lowland Heathland	Comprehensive. Some overlap with Lowland Dry Acid Grassland.	11,813	3.04	1	0.01	1	
<b>Woodland, wood-pasture and parkland</b>							
Lowland Beech and Yew Woodland	Not comprehensive. Ongoing work to distinguish from Lowland Mixed Deciduous Woodland in old surveys.	254	0.07				
Lowland Mixed Deciduous Woodland	Ongoing work as all ancient/ non ancient woodland has been included yet not all has been surveyed for qualifying NVC types. See also above.	36,006	9.27	183	2.31	184	-1
Wet Woodland	Fairly comprehensive. Areas will exist in LMDW that are not yet surveyed for qualifying types.	2,041	0.53	37	0.47	37	
Wood-Pasture and Parkland	Not comprehensive. Further work needed to classify this habitat within historic parkland.	5,518	1.42	15	0.19	15	
<b>Arable, orchards and hedgerows</b>							
Arable Field Margins	Incomplete. Figures only show SINCs on arable land designated for rare arable plants.	[91.72]	[0.02]	[26.73]	[0.33]	[26.73]	[0]

Priority Habitat	Comments on Completeness	Combined Hants area (ha)	% of Combined Hants area	HVBC area (ha)	% of HVBC area	2014/15 HVBC area (ha)	Change in area (ha)
Hedgerows	No comprehensive information for Priority hedgerows. All hedgerows mapped as linear features (km)	[16,457]		[200]			
Traditional Orchards	Work to be undertaken to incorporate areas recently identified by PTES under contract to NE.		0.00				
<b>Open waters</b>							
Ponds	No comprehensive data yet available.						
Eutrophic Standing Waters	No comprehensive information yet available.	46	0.01				
Rivers	Incomplete data. Approx. figures for Chalk Rivers only calculated from EA's River GIS layer (km)...	[634]					[0]
<b>Wetlands</b>							
Coastal and Floodplain Grazing Marsh	Further work is needed to identify all qualifying grazing marsh from survey data. Some overlap with Lowland Meadows and with Purple Moor Grass and Rush Pastures.	9,561	2.46	178	2.25	179	-1
Lowland Fens	Comprehensive.	1,899	0.49				
Reedbeds	Not comprehensive	279	0.07	2	0.03	2	
<b>Coastal</b>							
Coastal saltmarsh	EA data partly verified	869	0.22	209	2.64	209	
Coastal Sand Dunes	EA data partly verified	48	0.01	40	0.51	40	
Coastal Vegetated Shingle	Comprehensive	223	0.06	47	0.59	47	
Intertidal mudflats	EA data partly verified	4,418	1.14	1,380	17.45	1,380	
Maritime Cliff and Slopes	Comprehensive	43	0.01	1	0.01	1	
Saline lagoons	Comprehensive	55	0.01	6	0.08	6	
<b>Marine</b>							
Seagrass beds	Not comprehensive. Separate HWT data available	49	0.01	46	0.58	46	
<b>Total</b>		<b>81,862</b>	<b>21</b>	<b>2,231</b>	<b>28.20</b>	<b>2,244</b>	<b>-13</b>

### Summary:

1. Because of re-surveying and re-interpretation some areas of Lowland Mixed Deciduous Woodland and Lowland Meadows has decreased. Areas particularly affected in the Havant area include grassland at George Staunton Country Park (High Lawn) and Neville's Park.

**Notes:**

1. The Hampshire and district totals of Priority habitat are the sum of the individual Priority habitat types (excluding Arable Field Margins and Rivers). This is not the total area of land covered by Priority habitat within Hampshire and each district because some Priority habitat types overlap and hence are double counted (e.g. Coastal and Floodplain Grazing Marsh may overlap Lowland Meadows or Purple Moor Grass and Rush Pastures).
2. Because the total area of Priority habitat may include areas when habitats overlap the % of the district area covered by Priority habitat may be slightly over-exaggerated.
3. Minor changes in area might not always reflect real change, but are results of a rounding of figures.

**15.2 Nature Conservation Designations****Table 15B: Extent of Nature Conservation Designations (as at 31st March 2016)**

Designation	Combined Hants sites (no)	Combined Hants area (ha)	Combined Hants area (%)	HVBC sites (no)	HVBC area (ha)	HVBC area (%)	2014/15 HVBC area (ha)	Change (ha)
LNR	66	2,366	1	8	218	2.75	218	
NNR	11	2,173	1					
RAMSAR	6	36,993	10	1	2,430	30.72	2,430	
SAC	13	37,095	10	1	2,270	28.69	2,270	
SPA	10	41,797	11	1	2,430	30.72	2,430	
SSSI	131	50,560	13	4	2,677	33.84	2,677	
Stat Sites Combined	237	51,345	13	15	2,716	34.34	2,716	
SINC	4,065	36,034	9	145	886	11.20	886	

**Summary:**

1. There were no changes to statutory sites during 2015/16.
2. For details of any new, amended and deleted SINCs see tables 15G, H & I.
3. The figures do not include the marine pSPA "Solent and Dorset Coast".

**Notes:**

1. The areas total for 'Statutory sites combined' may not equal the total for each of the individual statutory site designations because there is often an overlap between statutory designations.



**Table 15C: Statutory Designated Sites (as at 31st March 2016)**

Designation	Site Name	Area (ha) within district
LNR	Brook Meadow (Emsworth)	3.35
LNR	Farlington Marshes	1.26
LNR	Gutner Point	68.99
LNR	Hayling Billy	42.02
LNR	Hazleton Common LNR	1.39
LNR	Sandy Point	18.32
LNR	The Kench, Hayling Island	6.04
LNR	West Hayling	76.23
Ramsar	Chichester and Langstone Harbours	2,430.32
SAC	Solent Maritime	2,269.68
SPA	Chichester and Langstone Harbours	2,430.32
SSSI	Chichester Harbour	1,005.79
SSSI	Langstone Harbour	1,424.53
SSSI	Sinah Common	242.75
SSSI	Warblington Meadow	3.87

### 15.3 Priority Habitats within Designated Sites

**Table 15D: Extent of Priority habitats within Designated Sites (as at 31st March 2016)**

Designated Sites	Combined Hants area (ha)	Combined Hants area (%)	HVBC (ha)	HVBC area (%)	2014/15 HVBC area (ha)	Change area (ha)
<b>Statutory sites combined</b>	38,147	45.3	1,774	79.6	1,775	-1
<b>SINC</b>	21,363	25.4	331	14.8	345	-14
<b>Total combined</b>	<b>58,732</b>	<b>69.7</b>	<b>2,094</b>	<b>93.9</b>	<b>2,108</b>	<b>-14</b>

#### Summary:

1. Just under 94% of Priority habitat in Havant is within designated sites.

#### Notes:

1. Total Priority habitat in Havant as at 31st March 2016 = 2,231ha.

## 15.4 Condition of Sites of Special Scientific Interest (SSSIs)

**Table 15E: Conditions of Sites of Special Scientific Interest (SSSIs) (as at 31st March 2016)**

Condition	Combined Hants area (ha)	Combined Hants area (%)	HVBC area (ha)	HVBC area (%)	2014/15 HVBC area (ha)	Change in area (ha)
<b>Favourable</b>	21,341.14	42.2	109.98	4.1	109.98	0.00
<b>Unfavourable Recovering</b>	27,745.85	54.9	2,566.96	95.9	2,567.03	-0.07
<b>Unfavourable no Change</b>	885.04	1.8				
<b>Unfavourable Declining</b>	564.17	1.1				
<b>Part Destroyed</b>	6.34	0.0				
<b>Destroyed</b>	17.44	0.0				
<b>Grand Total</b>	<b>50,561.98</b>	<b>100.0</b>	<b>2,676.94</b>	<b>100.0</b>	<b>2,677.01</b>	<b>-0.07</b>

### Notes:

1. Although data has been provided by Natural England the total amount of SSSI may differ from NE figures because NE do not always assign a portion of an SSSI to the correct District where the majority of that SSSI occurs within another District, whereas HBIC are able to clip the SSSI management units directly to the District boundaries. Natural England have also re-digitised some boundaries hence the slight decrease in area.

## 15.5 SINC changes observed and recorded

**Table 15F: Extent of changes to SINCS observed and recorded between 1st April 2015 and 31st March 2016**

SINCS	Hants sites (no)	Hants sites (area)	HVBC sites (no)	HVBC sites (area)
<b>Total sites (2014/15)</b>	4,046	35,992.64	145	886.05
<b>New Sites</b>	23	39.45	1	2.33
<b>Amended Sites</b>	28	7.13	2	-1.73
<b>Deleted sites</b>	4	-4.87	1	-0.69
<b>Total sites (2015/16)</b>	4,065	36,034.35	145	885.96
<b>Net change</b>	<b>19</b>	<b>41.71</b>		<b>-0.09</b>
<b>% change in area</b>		4.09		-0.01

### Notes:

1. Data extracted from HBIC SINC layer between 1st April 2015 and 31st March 2016.
2. Incorporates the decisions from the November 2015 panel.

Sharing information about Hampshire's wildlife

The Hampshire Biodiversity Information Centre Partnership includes local authorities, government agencies, wildlife charities and biological recording groups.



**Table 15G: New SINC approved between 1st April 2015 and 31st March 2016**

Site Ref	Site Name	New Size (ha)	New Criteria	Panel date
HV0146	West Lane Field A	2.33	2B	Nov 2015

**Table 15H: Deleted SINC approved between 1st April 2015 and 31st March 2016**

Site Ref	Site Name	Reason	Old Size (ha)	Old Criteria	Panel date
HV0060	Landfill Meadow	Data Correction/Reinterpretation	0.69	4A/6A	Nov 2015

**Table 15I: Major amendments to SINC between 1st April 2015 and 31st March 2016**

Site Ref	Site Name	Reason	Old Size (ha)	New Size (ha)	Old Criteria	New Criteria
HV0074	Pound Croft Field Drains	Agricultural Improvement	2.06	0.33	6A	4A/6A
HV0067	Pill Box Field	Lack of management			2B	2D/6A

