

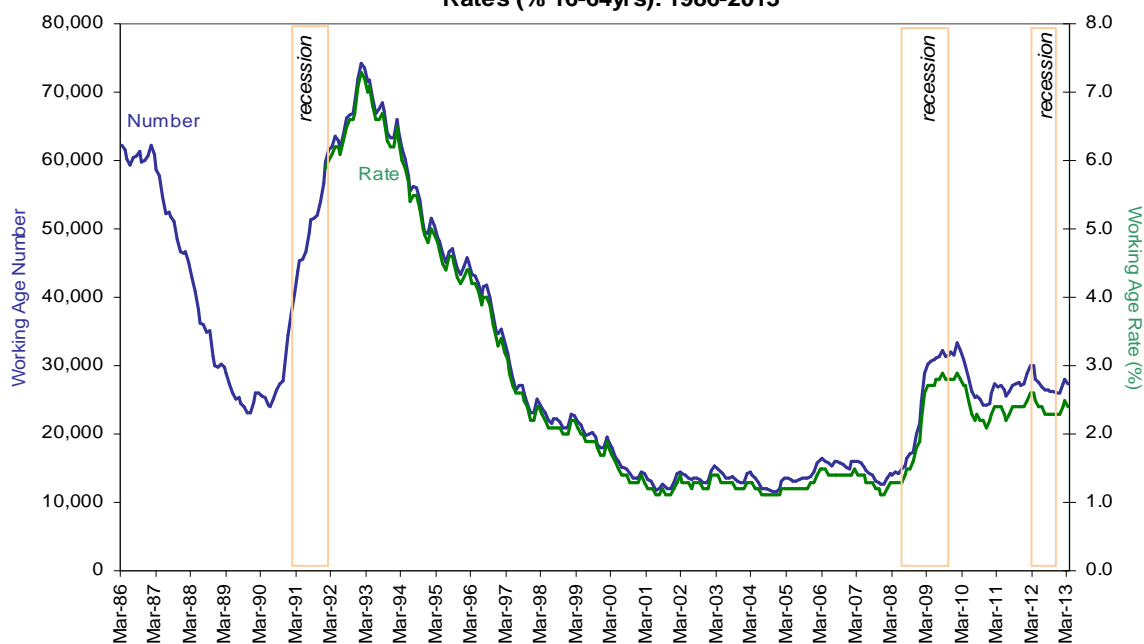
HAMPSHIRE LABOUR MARKET BULLETIN

March 2013

March 2013 HEADLINES

The Hampshire Economic Area saw 731 fewer unemployed benefit claimants (JSA) for March 2013. This led to the working age claimant rate (16-64 yrs) moving 0.1 of a percentage point downwards to 2.4%. With the national rate unchanged at 3.9%, the Hampshire rate is 1.5 percentage points lower. Nationally, an increase in the broader ILO unemployment by 70,000, and an upward change in the rate to 7.9%, saw a rise in unemployment levels for the second consecutive month. The nearest equivalent Hampshire Economic Area rate for the 12 months to December 2012 was 5.8%. Locally, all broad age groups saw JSA claimant numbers fall on the month. Although not directly comparable, under the national ILO measure the number of unemployed 16-24 year olds saw an upward movement on the quarter to just below the one million mark. Nationally, with 2,000 fewer people in employment the employment rate was virtually unchanged on the quarter, but 0.9 percentage points up on the year. The fall in employment was down to 62,000 fewer part-time employees offsetting a gain of 60,000 full-time employees. Locally, long term employment i.e. over 12 months was down on the month, but higher on the same period last year. Nationally, ILO long term unemployment for over 12 months rose on the quarter

Hampshire Economic Area Unemployed Benefit Claimant Number and Working Age Rates (% 16-64yrs): 1986-2013



Unemployed Benefit Claimants	Number	Rate (%)
March 2013:	27,308	2.4
Change on previous month:	-731	-0.1
Change on year (March 2012):	-2,675	-0.2

Hampshire Economic Area (HEA) Summary

Overall Hampshire Economic Area Claimant Count

Unemployed claimants (JSA) for March 2013 stood at 27,308 with 731 fewer claimants on February 2013, and 2,675 fewer than March 2012. The working age (16-64yrs) unemployed claimant rate was down 0.1 of a percentage point to 2.4%. The South East rate was 0.1 percentage points lower at 2.5%, while the UK rate was unchanged at 3.9%, making the Hampshire Economic Area 1.5 percentage points lower than the UK rate.

All 13 local district authorities saw a fall in unemployed benefit claimants, ranging from eight fewer claimants in Test Valley to 120 fewer claimants in the New Forest.

Male unemployed benefit claimant numbers for March 2013 were down by 456 on February 2013 to stand at 18,060. Female numbers were down by 275 to stand at 9,248 in March 2013. Unemployment benefit claimant numbers for males are down on the year (Mar 2012) by 2,369, whilst female numbers were down by 306.

Claimant counts by age and duration

The level of 18-24 year olds on unemployment benefit fell by 145 on the month to 7,480. The rate saw a 0.1 percentage point drop to 4.3%, and down 0.8 percentage points on the year. The 25-49 age group saw 455 fewer claimants to stand at 14,635, although the rate was unchanged at 2.5%. The 50-64 age group saw 140 fewer claimants to stand at 4,965, with the rate decreasing by 0.1 of a percentage point to 1.5%. Working age (16-64yrs) long term unemployed benefit claimants (claiming over 12 months) were down by 30 on the month to 5,850, but up on the year by 1,000. The number claiming for six months plus was up by 410 to stand at 10,105, but 610 lower on the year.

ILO unemployment (Government's preferred measure from Labour Force Survey)

National ILO unemployment numbers were up by 70,000 on the quarter to 2.56 million, but down by 71,000 on the year. The rate was 7.9% (up by 0.2 percentage points), but down by 0.3 percentage points on the year. The United States rate was 7.6% for March 2013, whilst the European Union rate for February was 10.9%. The nearest equivalent rate for the Hampshire Economic Area for the 12 months to December 2012 was 5.8%. Nationally, male unemployment was up by 37,000 on the quarter to stand at 1.44 million, with the level of female unemployment up by 33,000 on the quarter to stand at 1.12 million. The number of people that are long term unemployed (12 months plus) was up by 8,000 to 900,000. Those unemployed over two years stood at 463,000, up 28,000 on the quarter. The number of 16 to 24 year olds out of work was close to the one million mark, with numbers up by 20,000 to 979,000. The rate was up by 0.6 of a percentage point to 21.1%.

Employment and Economic Inactivity

The UK working age employment rate stood at 71.4%, which was virtually unchanged on the quarter but 0.9 percentage points up on the year. Employment fell on the quarter by 2,000 to reach 29.70 million, although up 488,000 on the year. The fall in employment was in part-time jobs, which fell by 62,000. This contrasts to an increase in full-time jobs by 60,000. The number of employees rose by 22,000 on the quarter, as opposed to a fall of 2,000 in the number of self-employed. Unpaid family members was down by 9,000, while the number on government support training or employment programmes that count as employment was down 14,000 to 151,000.

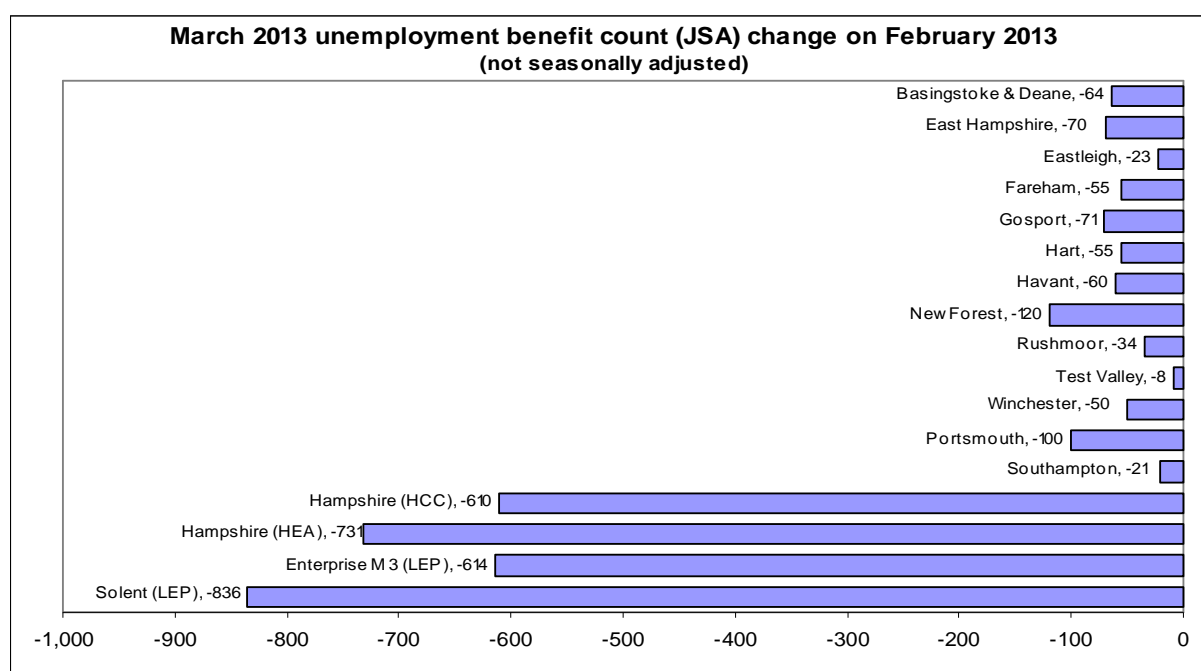
The UK working age economic inactivity rate stood at 22.2%, down 0.2 on the quarter and down 0.7 on the year. The number of economically inactive was down 57,000 on the quarter to stand at 8.95 million for the three months to February 2013. The number of working age economically inactive due to long term illness fell by 18,000 on the quarter to 2.02 million. There were 1.37 million economically inactive people who had retired before reaching the age of 65, down 43,000 on the quarter and down 109,000 on the year. The number of economically inactive students was 2.24 million, up 21,000 on the quarter, but down 28,000 on the year.

1. Key Statistics: Measures of unemployment and worklessness

	DWP Unemployed claimant count and RWAP* rate (JSA) Mar 2013		ONS ILO modelled unemployed Jan 12 to Dec 12		DWP Key Out-of work benefits count and RWAP* rate August 2012	
	Count	Rate	Count	Rate	Count	Rate
Hampshire (HCC)	16,291	2.0	40,000	5.3	56,910	6.9
Basingstoke & Deane	2,292	2.1	5,000	5.4	7,650	6.9
East Hampshire	1,038	1.4	3,000	4.6	3,780	5.3
Eastleigh	1,481	1.8	3,000	5.0	5,170	6.4
Fareham	1,217	1.8	3,000	4.5	4,110	5.9
Gosport	1,511	2.9	3,000	6.6	5,240	10.0
Hart	658	1.1	2,000	3.8	2,230	3.8
Havant	2,502	3.4	4,000	7.8	8,180	11.2
New Forest	1,869	1.8	4,000	4.4	7,340	7.1
Rushmoor	1,604	2.5	3,000	6.0	4,930	7.7
Test Valley	1,185	1.6	3,000	4.4	4,370	6.0
Winchester	934	1.3	3,000	3.9	3,910	5.3
Portsmouth	5,294	3.8	9,000	7.2	16,070	11.5
Southampton	5,723	3.5	10,000	7.9	18,610	11.4
Hampshire (HEA)	27,308	2.4	54,000	5.8*	91,600	8.1
Enterprise M3 (LEP)	17,110	1.7	-	-	60,960	5.9
Solent (LEP)	26,606	2.7	-	-	86,990	8.8

* RWAP - Resident Working Age Population. (16-64 for males and females). ** Estimated from sum of modelled district figures

The ILO definition of unemployment is the Government's preferred measure. This estimates those people who are looking for work, but are not claiming benefits. The worklessness measure is a wider Government indicator that includes Jobseekers claimants, Employment Support Allowance/IB, Lone parent benefit and those on other Income Support related benefits.

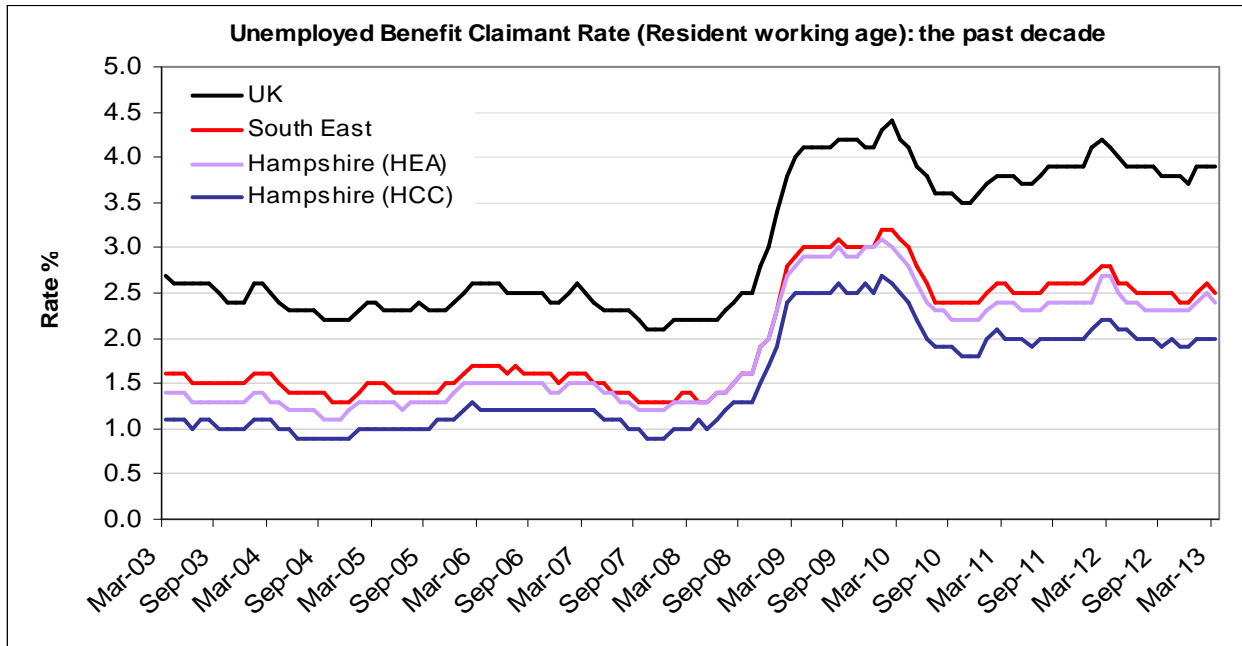


Claimants of Job Seekers Allowance 18+ (seasonally adjusted), % working age*

March 2013	Male		Female		Total		Change on:	
	Estimate	Rate %	Estimate	Rate %	Estimate	Rate %	One Month	One Year
South East	85,400	3.1	46,000	1.7	131,400	2.4	-1,200	-11,700
Great Britain	953,400	4.8	512,800	2.6	1,466,200	3.7	-7,100	-80,600
United Kingdom	999,300	4.9	531,700	2.6	1,531,000	3.7	-7,000	-77,500

This measure is the JSA claimant rate commonly quoted by the national media, as it is seasonally adjusted. This takes into account the seasonal nature of labour markets. *ONS First Release use claimant count + total workforce as denominator.

2. Key Statistics: Key labour market indicators



APS ILO Unemployment as % of economically-active population (seasonally adjusted)

December 2012 to February 2013

	Male		Female		Total		Change on:	
	Estimate	Rate	Estimate	Rate	Estimate	Rate	Quarter*	1 Year
South East	172,000	7.1%	134,000	6.4%	306,000	6.8%	15,000	23,000
Great Britain	1,395,000	8.3%	1,096,000	7.5%	2,491,000	7.9%	67,000	-84,000
United Kingdom	1,445,000	8.3%	1,118,000	7.5%	2,563,000	7.9%	70,000	-71,000

* Unemployment data is published for 3-month rolling averages with changes compared to the previous non-overlapping 3-month time period

Labour Market Indicators (totals represent '000s) (non-seasonally adjusted)

January 2012 - December 2012

	Labour Supply							Lab.Demand Jobs (2011)	
	Employed		Modelled Unemployed			Econ. Inactive		Total	Density
	Total	%	Total	% a	% b	Total	%		
Hampshire (HCC)	646	76.9	40	5.3	4.0	153	19.1	674	0.81
Basingstoke & Deane	90	80.5	5	5.4	4.5	16	15.0	95	0.87
East Hampshire	56	82.2	3	4.6	3.4	9	14.4	58	0.80
Eastleigh	65	81.8	3	5.0	2.2	12	16.0	69	0.85
Fareham	58	80.0	3	4.5	5.7	10	14.3	58	0.84
Gosport	37	71.5	3	6.6	5.3	11	23.2	25	0.48
Hart	48	78.2	2	3.8	4.2	10	17.6	46	0.78
Havant	52	68.3	4	7.8	4.7	20	27.0	47	0.65
New Forest	83	76.0	4	4.4	3.1	21	20.9	79	0.76
Rushmoor	45	72.3	3	6.0	6.3	13	21.4	51	0.80
Test Valley	55	74.9	3	4.4	2.3	16	22.8	62	0.85
Winchester	58	77.1	3	3.9	3.6	14	19.3	83	1.14
Portsmouth	107	72.3	9	7.2	5.8	32	21.9	123	0.88
Southampton	120	68.3	10	7.9	5.4	45	26.3	119	0.72
Hampshire (HEA)	873	75.0	54	5.8*	4.6	228	20.4	916	0.88
South East	4,207	74.7	265	5.9	4.9	1,108	20.4	4,438	0.80
United Kingdom	29,295	70.6	2,496	7.9	6.2	9,330	23.2	31,711	0.78

a Unemployment rate using 16+ population; b Unemployed rate derived from Employed and Economically Inactive rates

* HEA unemployed rates are estimated from the ONS model based unemployment data and the latest APS 16+ unemployment denominator. The Modelled count and rate will be different (and lower) to the APS count and rate.

3. Claimant Counts and occupation (seasonally unadjusted)

March 2013

	Males	Rate %	Females	Rate %	Total	Rate	1 Month	1 Year
Hampshire (HCC)	10,663	2.6	5,628	1.3	16,291	2.0	-610	-1,952
Basingstoke & Deane	1,480	2.7	812	1.5	2,292	2.1	-64	-229
East Hampshire	646	1.8	392	1.1	1,038	1.4	-70	-102
Eastleigh	949	2.4	532	1.3	1,481	1.8	-23	-269
Fareham	819	2.4	398	1.1	1,217	1.8	-55	-178
Gosport	1,013	3.9	498	1.9	1,511	2.9	-71	-263
Hart	424	1.4	234	0.8	658	1.1	-55	-112
Havant	1,680	4.7	822	2.2	2,502	3.4	-60	-266
New Forest	1,259	2.5	610	1.1	1,869	1.8	-120	-235
Rushmoor	1,022	3.2	582	1.8	1,604	2.5	-34	-142
Test Valley	757	2.1	428	1.2	1,185	1.6	-8	-45
Winchester	614	1.7	320	0.9	934	1.3	-50	-111
Portsmouth	3,488	4.8	1,806	2.7	5,294	3.8	-100	-210
Southampton	3,909	4.6	1,814	2.3	5,723	3.5	-21	-513
Hampshire (HEA)	18,060	3.2	9,248	1.6	27,308	2.4	-731	-2,675
Enterprise M3 (LEP)	11,102	2.2	6,008	1.2	17,110	1.7	-614	-2,020
Solent (LEP)	17,716	3.6	8,890	1.8	26,606	2.7	-836	-2,226
South East	90,610	3.3	47,419	1.7	138,029	2.5	-3,502	-12,518
Great Britain	998,713	5.0	520,520	2.6	1,519,233	3.8	-28,352	-85,276
United Kingdom	1,045,374	5.1	539,094	2.6	1,584,468	3.9	-29,321	-82,391

Hampshire (HEA): Recorded occupation of claimant

SOC2000 Major groups	Usual occupation			Sought occupation		
	Male	Female	Total*	Male	Female	Total*
Occupation Unknown	455	405	865	455	405	865
Managers and Senior Officials	775	230	1,005	770	230	1,005
Professional Occupations	410	170	580	415	175	590
Associate Professional and Technical	875	260	1,135	890	255	1,145
Administrative and Secretarial	1,090	1,490	2,580	1,075	1,475	2,550
Skilled Trades	2,195	85	2,280	2,190	85	2,275
Personal Service Occupations	295	1,165	1,460	295	1,180	1,480
Sales and Customer Service	4,105	3,525	7,630	4,095	3,545	7,640
Process, Plant and Machine Operative	1,760	180	1,945	1,795	170	1,965
Elementary	5,975	1,660	7,635	5,945	1,655	7,600
Total	17,935	9,175	27,110	17,935	9,175	27,110

* Rounded to nearest 5 by DWP, resulting in rounding error and differences with total claimants above

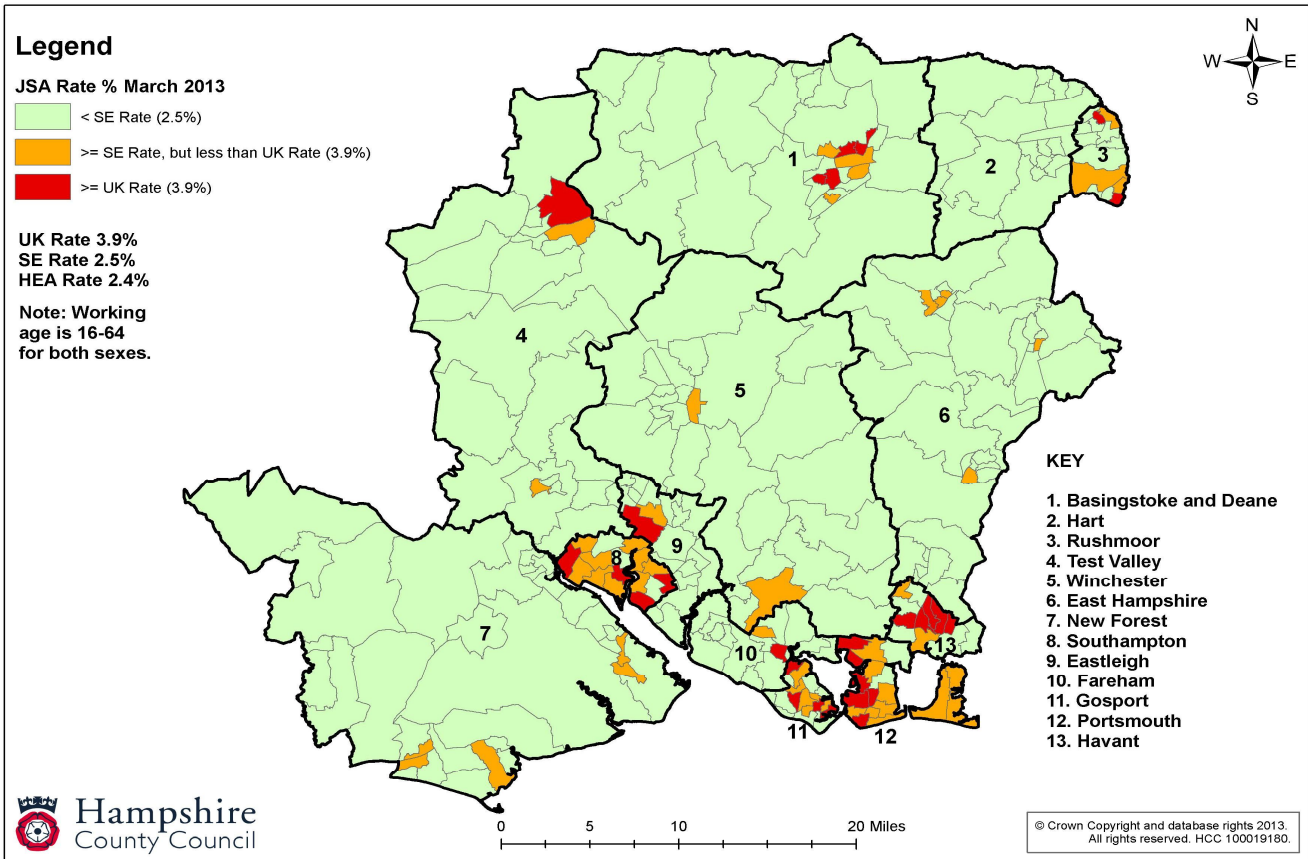
Hampshire HEA: DWP Claimant Aged 18-24: Top Ten Sought Occupation

Sought Occupation (SOC2000 Minor groups)	Claimants*	%**	% which	
			Males	Females
711 : Sales Assistants And Retail Cashiers	2,700	36.1	59.6	40.4
914 : Elementary Goods Storage Occupations	620	8.3	96.0	4.0
922 : Elementary Personal Services Occupations	580	7.8	69.0	31.0
415 : Administrative Occupations: General	440	5.9	50.0	50.0
913 : Elementary Process Plant Occupations	370	4.9	85.1	14.9
923 : Elementary Cleaning Occupations	305	4.1	63.9	34.4
912 : Elementary Construction Occupations	235	3.1	100.0	2.1
611 : Healthcare And Related Personal Services	180	2.4	19.4	83.3
721 : Customer Service Occupations	160	2.1	62.5	37.5
523 : Vehicle Trades	140	1.9	96.4	3.6
Total of top ten sought occupations and % of claimants:	5,730	76.6		

* Rounded to nearest 5 by DWP, resulting in rounding error and differences in total claimants and with gender %.

** % of 18-24 year old unemployed claimants.

4. Claimant hot spots & rural/urban rates of unemployed benefit claimant counts



Source: Hampshire County Council using ONS March 2013

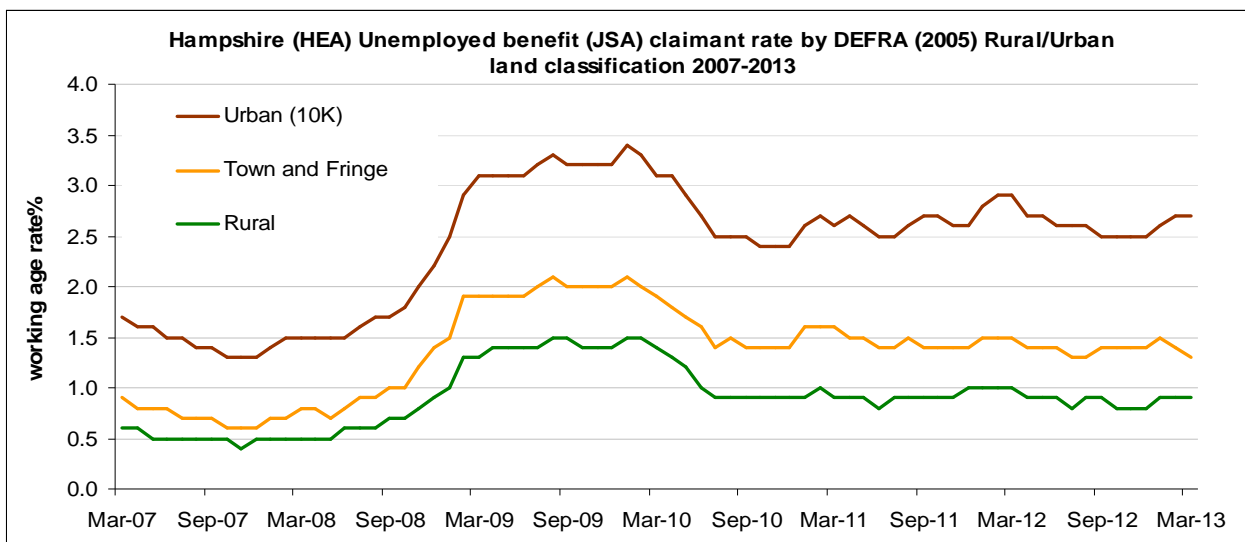
Wards Highest Ten Rates

Ward (CAS 2003)	District	Rate %	No.
Battins	Havant	7.5	301
Warren Park	Havant	7.3	324
Charles Dickens	P'mouth	6.7	899
Bitterne	Soton	6.1	535
Town	Gosport	6.0	181
Bondfields	Havant	5.9	245
Barncroft	Havant	5.9	219
Nelson	P'mouth	5.3	575
Grange	Gosport	5.1	194
Woolston	Soton	4.7	429

Wards Lowest Ten Rates

Ward (CAS 2003)	District	Rate %	No.
Eversley	Hart	0.5	9
Downland	E Hants	0.5	7
Ampfield and Braishfield	T' Valley	0.5	7
Cheriton & B'hops Sutton	W'chester	0.5	7
Itchen Valley	W'chester	0.5	5
Upper Meon Valley	W'chester	0.5	5
Forest North West	N Forest	0.4	6
Owslebury and Curdrige	W'chester	0.3	7
Ropley and Tisted	E Hants	0.3	4
Bramshaw*	N Forest	0.2	4

*Bramshaw, Copythorne North and Minstead



5. Claimant Counts Age and duration (seasonally unadjusted)

March 2013

	18-24 years		25-49 years		50-64 years	
	Number	Rate	Number	Rate	Number	Rate
Hampshire (HCC)	4,635	4.5	8,380	1.9	3,110	1.2
Basingstoke & Deane	560	4.6	1,235	2.0	465	1.5
East Hampshire	290	3.5	520	1.4	225	0.9
Eastleigh	375	3.7	770	1.8	315	1.3
Fareham	405	4.9	600	1.7	200	0.9
Gosport	500	7.2	765	2.8	215	1.4
Hart	150	2.4	365	1.1	135	0.8
Havant	815	8.3	1,270	3.5	415	1.7
New Forest	580	4.9	895	1.8	380	1.0
Rushmoor	415	4.6	830	2.2	340	2.3
Test Valley	330	3.9	610	1.6	235	1.0
Winchester	210	1.9	525	1.4	195	0.9
Portsmouth	1,360	4.3	3,035	4.2	895	2.9
Southampton	1,485	3.8	3,220	3.8	960	2.8
Hampshire (HEA)	7,480	4.3	14,635	2.5	4,965	1.5
Enterprise M3 (LEP)	4,155	3.2	9,150	1.7	3,625	1.2
Solent (LEP)	7,435	4.8	14,155	2.8	4,835	1.7
South East	35,075	4.7	76,105	2.6	26,100	1.6
Great Britain	408,260	7.1	852,865	4.0	252,750	2.3
United Kingdom	425,820	7.2	889,145	4.1	263,710	2.3

Note: Rounded to nearest 5 by DWP, resulting in rounding error and differences to Total claimants in Section 3.

Hampshire (HEA)	18-24 years		25-49 years		50-64 years	
	Number	Rate	Number	Rate	Number	Rate
Change on previous Month	-145	-0.1	-455	0.0	-140	-0.1
Change on a Year ago	-1,365	-0.8	-1,140	-0.2	-195	-0.1

	Claiming for over 6 months (16-64yrs)	Aged 24 and over					
		Claiming for over 12 months (16-64yrs)	Aged 18-24, claiming for under 6 months	Aged 18-24, claiming for over 6 months	under, claiming for over 12 months	Aged 25 and over, claiming for over 1 year	Aged 50 and over, claiming for over 6 months
Hampshire (HCC)	5,685	3,160	3,345	1,290	590	2,575	1,255
Basingstoke & Deane	770	415	440	120	50	365	180
East Hampshire	320	160	220	70	25	130	90
Eastleigh	525	300	275	100	55	245	135
Fareham	410	230	300	110	55	180	80
Gosport	570	340	340	160	75	265	100
Hart	195	85	115	35	5	80	55
Havant	1,080	680	500	315	165	515	190
New Forest	645	330	415	160	70	260	140
Rushmoor	530	300	315	100	45	255	135
Test Valley	335	175	265	65	25	155	80
Winchester	305	145	155	55	25	120	75
Portsmouth	2,325	1,500	905	455	210	1,290	480
Southampton	2,100	1,190	1,040	445	230	965	460
Hampshire (HEA)	10,105	5,850	5,290	2,190	1,025	4,825	2,195
Enterprise M3 (LEP)	5,750	3,125	3,150	1,005	430	2,695	1,465
Solent (LEP)	10,300	6,140	5,115	2,320	1,155	4,985	2,215
South East	54,485	32,580	24,605	10,470	5,305	27,275	12,250
Great Britain	674,470	414,640	265,125	143,140	73,615	341,030	131,325
United Kingdom	708,310	432,200	275,695	150,125	75,610	356,590	137,975

6. Worklessness

(Next release will be August 2013 for February 2013 data)

Composite Main Worklessness Measures (Hierarchical Counts*)

August 2012

	Out-of work		Jobseekers		Employment Support Allowance / Incapacity Benefit		Lone parent		Other Income related benefit	
	Total		Allowance		Benefit		Count		Count	
	Count	%	Count	%	Count	%	Count	%	Count	%
Hampshire (HCC)	56,910	6.9	15,370	1.9	32,020	3.9	7,230	0.9	2,300	0.3
Basingstoke & Deane	7,650	6.9	2,170	2.0	4,140	3.8	1,030	0.9	310	0.3
East Hampshire	3,780	5.3	920	1.3	2,300	3.2	430	0.6	130	0.2
Eastleigh	5,170	6.4	1,430	1.8	2,940	3.6	610	0.8	190	0.2
Fareham	4,110	5.9	1,210	1.7	2,290	3.3	440	0.6	160	0.2
Gosport	5,240	10.0	1,510	2.9	2,750	5.3	770	1.5	210	0.4
Hart	2,230	3.8	670	1.2	1,220	2.1	260	0.5	70	0.1
Havant	8,180	11.2	2,280	3.1	4,390	6.0	1,160	1.6	350	0.5
New Forest	7,340	7.1	1,760	1.7	4,490	4.3	830	0.8	270	0.3
Rushmoor	4,930	7.7	1,450	2.3	2,550	4.0	680	1.1	260	0.4
Test Valley	4,370	6.0	1,070	1.5	2,540	3.5	590	0.8	180	0.2
Winchester	3,910	5.3	920	1.3	2,410	3.3	420	0.6	160	0.2
Portsmouth	16,070	11.5	4,950	3.5	8,090	5.8	2,420	1.7	620	0.4
Southampton	18,610	11.4	5,280	3.2	10,030	6.1	2,700	1.6	620	0.4
Hampshire (HEA)	91,600	8.1	25,590	2.3	50,130	4.4	12,340	1.1	3,540	0.3
Enterprise M3 (LEP)	60,960	5.9	16,370	1.6	34,450	3.3	7,830	0.8	2,310	0.2
Solent (LEP)	86,990	8.8	24,240	2.5	48,010	4.9	11,440	1.2	3,310	0.3
South East	454,940	8.3	131,930	2.4	247,610	4.5	58,620	1.1	16,780	0.3
Great Britain	4,684,230	11.8	1,470,790	3.7	2,508,340	6.3	545,210	1.4	159,890	0.4

*To avoid double counting the out-of-work benefit claimants are allocated to one benefit using a hierarchical system, so that a person claiming Employment Support Allowance (ESA) and Lone Parent benefits would be counted under ESA.

Individual Benefit Counts (August 2012)

Employment Support Allowance (ESA) and Incapacity Benefit (IB) Claimants			Income support							
	ESA (All)	IB/SDA (All)	Total benefits	With Partner	No partner	Number of dependent children where IS claimants have no recorded partner				
						One	Two	Three	Four	Five
Hampshire (HCC)	16,240	16,350	16,150	1,850	14,300	3,510	2,450	1,200	390	170
Basingstoke & Deane	2,270	1,940	2,110	200	1,910	490	350	180	60	30
East Hampshire	1,140	1,210	1,140	150	990	210	140	80	20	10
Eastleigh	1,380	1,620	1,430	160	1,270	310	210	90	30	10
Fareham	1,130	1,210	1,040	110	930	240	140	70	20	10
Gosport	1,540	1,250	1,540	170	1,370	360	260	120	50	30
Hart	640	610	550	40	510	130	100	40	20	10
Havant	2,200	2,270	2,610	400	2,220	540	380	220	70	30
New Forest	2,080	2,500	2,100	240	1,860	420	280	140	50	20
Rushmoor	1,460	1,120	1,310	110	1,190	320	260	100	30	10
Test Valley	1,240	1,340	1,270	150	1,120	300	200	100	30	10
Winchester	1,180	1,270	1,060	120	950	210	140	60	30	10
Portsmouth	4,420	3,750	4,860	460	4,400	1,180	780	390	150	60
Southampton	5,080	5,090	5,900	620	5,280	1,300	890	450	210	70
Hampshire (HEA)	25,750	25,180	26,910	2,940	23,980	5,990	4,120	2,030	760	300
Enterprise M3 (LEP)	17,900	17,170	17,040	1,690	15,340	3,740	2,700	1,300	450	190
Solent (LEP)	24,390	24,380	25,670	2,950	22,720	5,620	3,780	1,880	700	290

Note that Employment Support Allowance (ESA) superseded IB in October 2008 for new claimants.

All IS benefits includes Incapacity benefits, lone parents, carers and Other income benefits, but not ESA.

Partner - Whether the claimant has a partner, as recorded on the administrative system.

~ These figures are nil or negligible. Data rounded to ten, rounding errors may cause differences to totals.

7. Vacancy Data

In the autumn of 2012 fundamental changes were made to the Jobcentre Plus handling of employer vacancies and services. The system was replaced by Universal Jobmatch, which is the Department for Work and Pensions (DWP) new job posting and matching service, and replaces Employer Direct, Employer Direct Online services and Job Warehouse. This will cause a substantial discontinuity in the series in NOMIS.

There are two facets to Universal Jobmatch. Firstly, consisting of an interactive service that enables users to upload their CV, create a job profile and receive tailored alerts. Employers will be able to post and manage their jobs online. Secondly, a Public Reporting Tool that allows for interactive searches for vacancy data.

The Public Reporting Tool consists of a various interactive reports, but until mid-2013 will be a beta version trialling the database. Once the final version of the Public Reporting tool is released and the data more fully understood the Labour Market Bulletin will resume publishing vacancy data.

For the interactive Universal Jobmatch click on the link:

<https://jobsearch.direct.gov.uk/register.aspx?redirect=http%3a%2f%2fjobsearch.direct.gov.uk%2fhome.aspx>

For the Public Reporting Tool (beta version) click on the link:

<https://jobsearch.direct.gov.uk/Reports/Reports.aspx>

8. Data Sources and Contacts

Sources via National Online Manpower Information System (NOMIS)

<https://www.nomisweb.co.uk/>

1. Claimant and Worklessness Benefit Counts: Department for Works and Pensions (DWP)
2. Unemployment and Key Labour Market Indicators: Office for National Statistics (ONS)
3. Labour Force Survey: International Labour organisation (ILO) unemployment and Key Labour Market Indicators
4. Vacancies: Jobcentre Plus

Office for National Statistic (ONS) sources not on NOMIS

National Statistical First Release (ONS)	http://www.statistics.gov.uk/statbase/Product.asp?vlnk=1944
Regional Statistical First Release (ONS)	http://www.statistics.gov.uk/StatBase/Product.asp?vlnk=15084
Time Series Data (ONS): GB ILO unemployment	http://www.statistics.gov.uk/statbase/TSDtimezone.asp

This publication is produced by the Spatial Strategy and Research team (Economy) in the Environment Department of Hampshire County Council.

Research and Intelligence
Second Floor Elizabeth II West
The Castle
Winchester SO23 8UD

For further information on the bulletin or to subscribe please contact Gareth Henry (Senior Research Officer)

E-mail: gareth.henry@hants.gov.uk

Telephone: 01962 846791

Glossary and Notes

Glossary

Labour Force Survey (LFS)/Annual Population Survey (APS) definitions

ILO Unemployment: All people aged 16 and over who are without a job, want a job, have actively sought work in the last four weeks and are available to start work in the next two weeks; or are out of work, have found a job and are waiting to start it in the next two weeks. The unemployment rate is the proportion of the economically active who are unemployed.

Economically Active: People aged 16 and over who are either in employment or unemployed. The Economically active rate is the percentage of people aged 16 and over who are economically active.

Economically Inactive: People who are neither in employment nor unemployed. This group includes, for example, those looking after the family and/or home or retired. The inactive rate is expressed as a percentage of the total population aged 16 and over, but can be calculated for a population group, such as those of working age.

Employment: People aged 16 or over who did paid work in the reference week (whether employed or self-employed); those who had a job that they were temporarily away from; those on government supported training and employment programmes; and those doing unpaid family work. The rate is the percentage of total in employment of all people in the relevant age group.

Department for Work and Pensions definitions

Claimant Count: Based on the administrative records of people claiming unemployed benefits. Since October 1996 this has been the number of people claiming Jobseeker's Allowance (JSA). The claimant count consists of all people claiming JSA at Jobcentre Plus local offices. They must declare that they are out of work, capable of, available for and actively seeking work during the week in which their claim is made. Nationally and regionally, the claimant rate is the number of claimants resident in an area expressed as a percentage of the sum of claimants and workforce jobs in the area (mid-year estimates are used). Sub-regionally, the claimant count is the number of claimants resident in an area expressed as a proportion of the resident population of working age. As at August 2010 working age is now 16-64 for both females and males.

Worklessness: Benefits that are paid to client groups subject to labour market activation policies, including: Jobseeker's Allowance (JSA); Employment Support Allowance (ESA) or Incapacity Benefit (IB); Lone parent; and Income support (IS).

Sought and usual occupation: Sought occupations are the types of occupations claimants are seeking when they register. Usual occupations are jobs they were doing or generally do, and this may be the same as the sought occupation.

Geography

Hampshire (HCC) refers to the County Council area only. The Hampshire Economic Area (HEA) includes Hampshire County Council, Portsmouth City Council and Southampton City Council. Using the ONS definition as at 23rd April 2012 the Solent LEP covers the New Forest, Test Valley, Winchester, Southampton, Eastleigh, Fareham, Gosport, Portsmouth, East Hampshire, Havant and the Isle of Wight. The Enterprise M3 LEP covers New Forest, Test Valley, Winchester, East Hampshire, Basingstoke and Deane, Hart, Rushmoor, Guildford, Surrey Heath, Waverley and Woking. Four Hampshire districts overlap with Solent: New Forest, East Hampshire, Test Valley and Winchester. The ONS LEP definitions may differ to definitions being used locally and based on other geographies.